

Bluestone Dam and Reservoir

“To exit, hit the “X” on your browser’s tab for this page.”

Bluestone Dam

Bluestone Dam, located at Hinton, is one of the major flood control dams in West Virginia. It has the largest drainage area and flood storage capacity of any dam in the state. It is built across New River, one mile above its junction with the Greenbrier River and two miles below the confluence of New River and Bluestone River. Prior to the construction of the Bluestone Dam, flooding was a major problem on this great river system. Bluestone Dam was authorized in 1935 by an executive order issued by President Franklin Roosevelt. Construction on the project began in 1942, but work was suspended in 1943 because of World War II. Work resumed in January 1946, and the dam was completed for operational purposes in January 1949, and totally completed in 1952. The approximate cost was \$30 million. With a drainage area of 4,565 square miles Bluestone Dam controls 44 percent of the river flow through the populous. It is a concrete gravity dam 165 feet high and 2,048 feet long, administered by the U.S. Army Corps of Engineers. Normal release of water from the Bluestone Lake is accomplished through 16 sluices in the base of the dam. The 790-foot spillway has 21 flood gates. There are also six sluiceways for hydroelectric power that have not been used in the early decades of the dam's history. The maximum discharge capacity is 430,000 square feet per second. The dam contains 942,000 cubic yards of concrete and 7,800 tons of steel. Its lake has a summertime surface of 2,040 acres and is very popular with boaters, skiers, and fishermen. Bluestone State Park, located on the Bluestone River about three miles above the dam, provides lodging, camping, a restaurant, and recreational facilities. The Bluestone Dam celebrated its 50th anniversary in 1999, when the Army Corps of Engineers estimated that the dam had prevented more than \$1.6 billion in flood damages. Bluestone ended its first half-century with important improvements under way. The lake became a major supplier of public water in 1997, serving Hinton and Princeton and a large area between and around those two communities. Reinforcements were added to the dam under the federal Dam Safety Assurance program, with the work continuing through the early years of the 21st century. Simultaneously, work began to add hydroelectric capacity to the dam, in a partnership between Hinton and other communities and private industry. (To date, the hydroelectric work has not started.)

This Article was written by Michael M. Meador

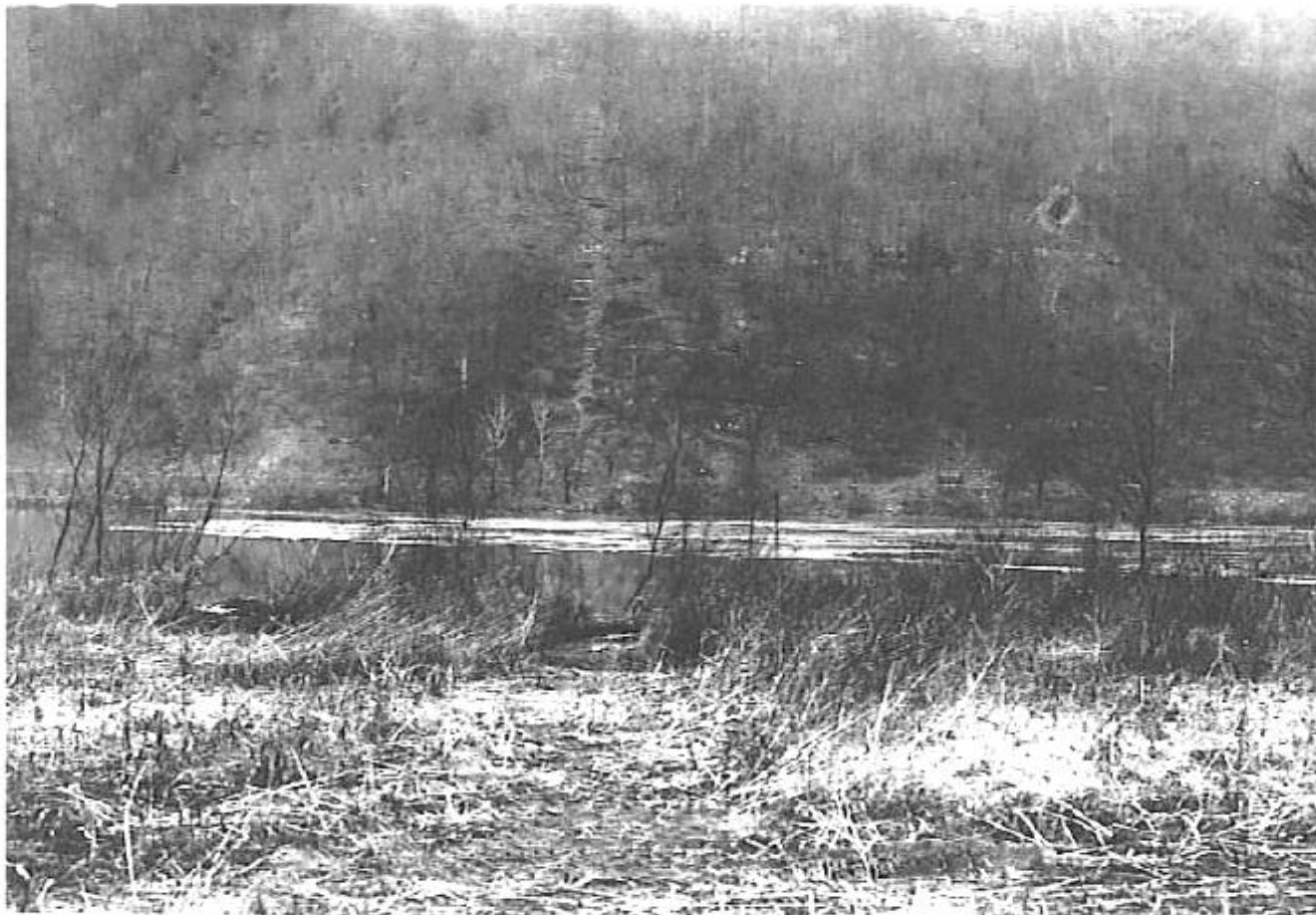
Last Revised on January 04, 2011 Sources Casto, James E. Bluestone Dam Celebrates 50 Years. Wonderful West Virginia, (1999). "Bluestone Lake," Pamphlet. U.S. Army Corps of Engineers, 1999. Cite This Article Meador, Michael M. "Bluestone Dam and Lake." e-WV: The West Virginia Encyclopedia. 04 January 2011.

Bluestone Dam

1942 - Construction site Headquarters



**Bluestone Dam
1942 - Looking across New River
prior to construction**

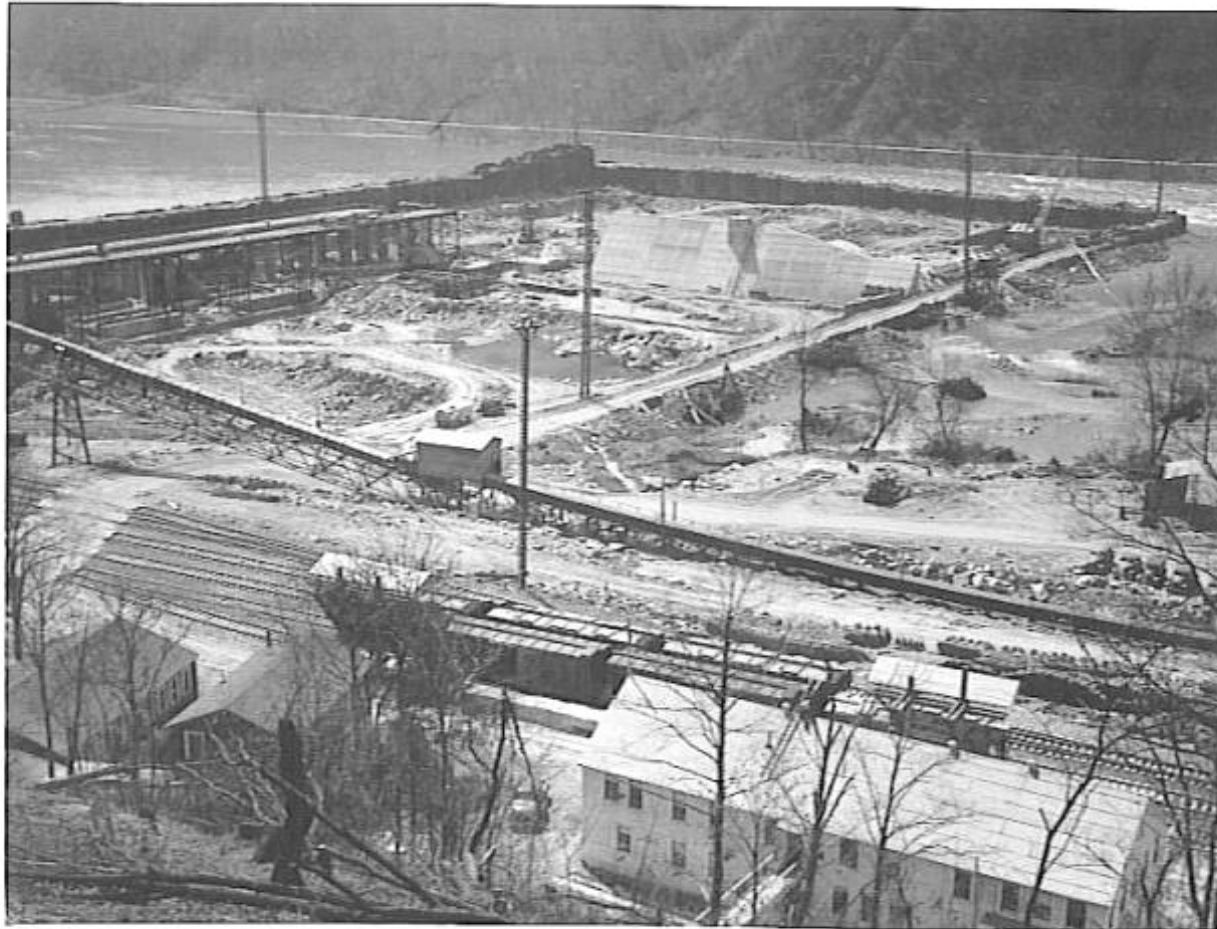


**Bluestone Dam
1942 - Construction site
initial grading - looking across the New River**



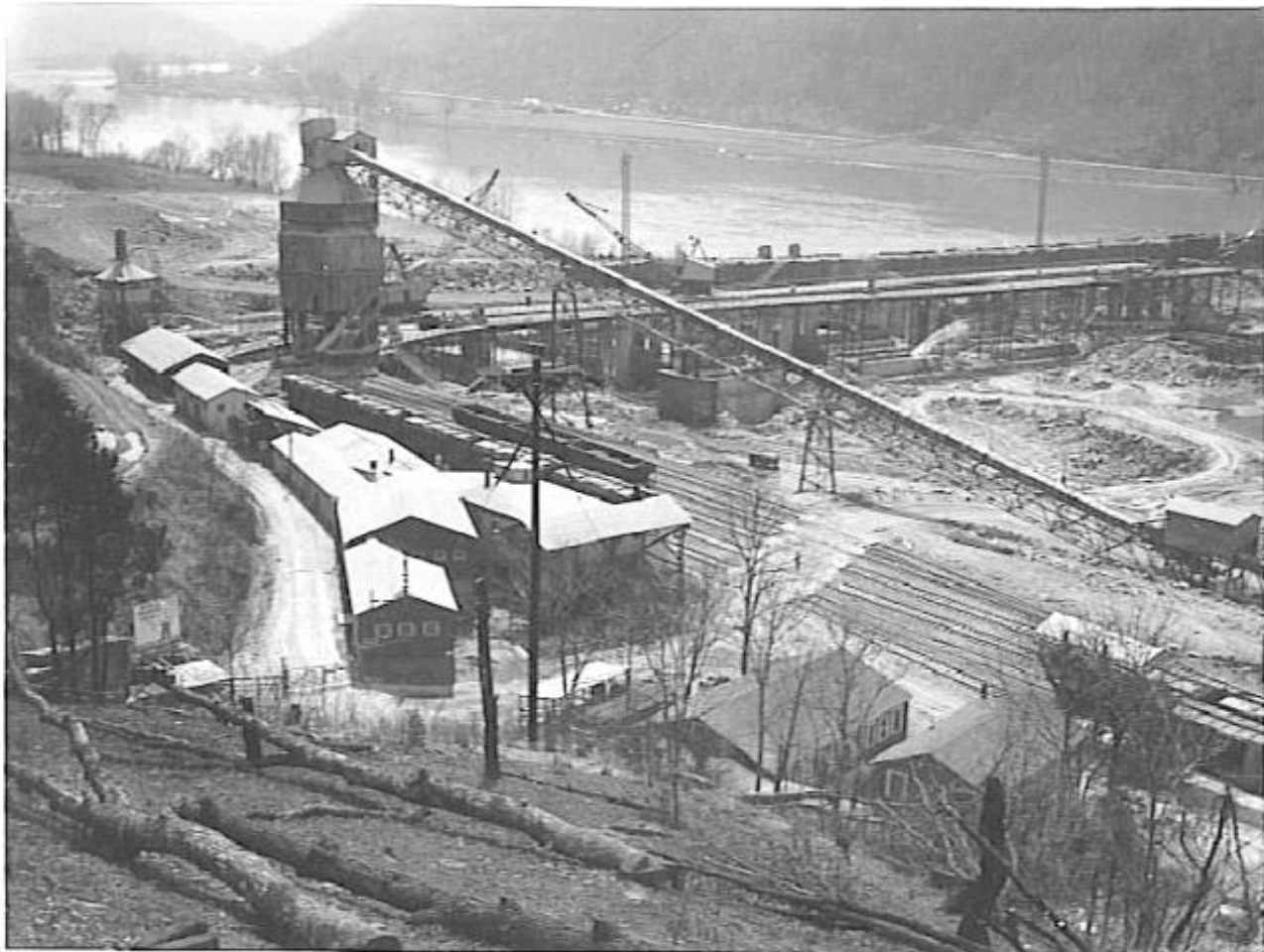
Bluestone Dam

1942 - Construction site



Bluestone Dam

1942 - Construction site



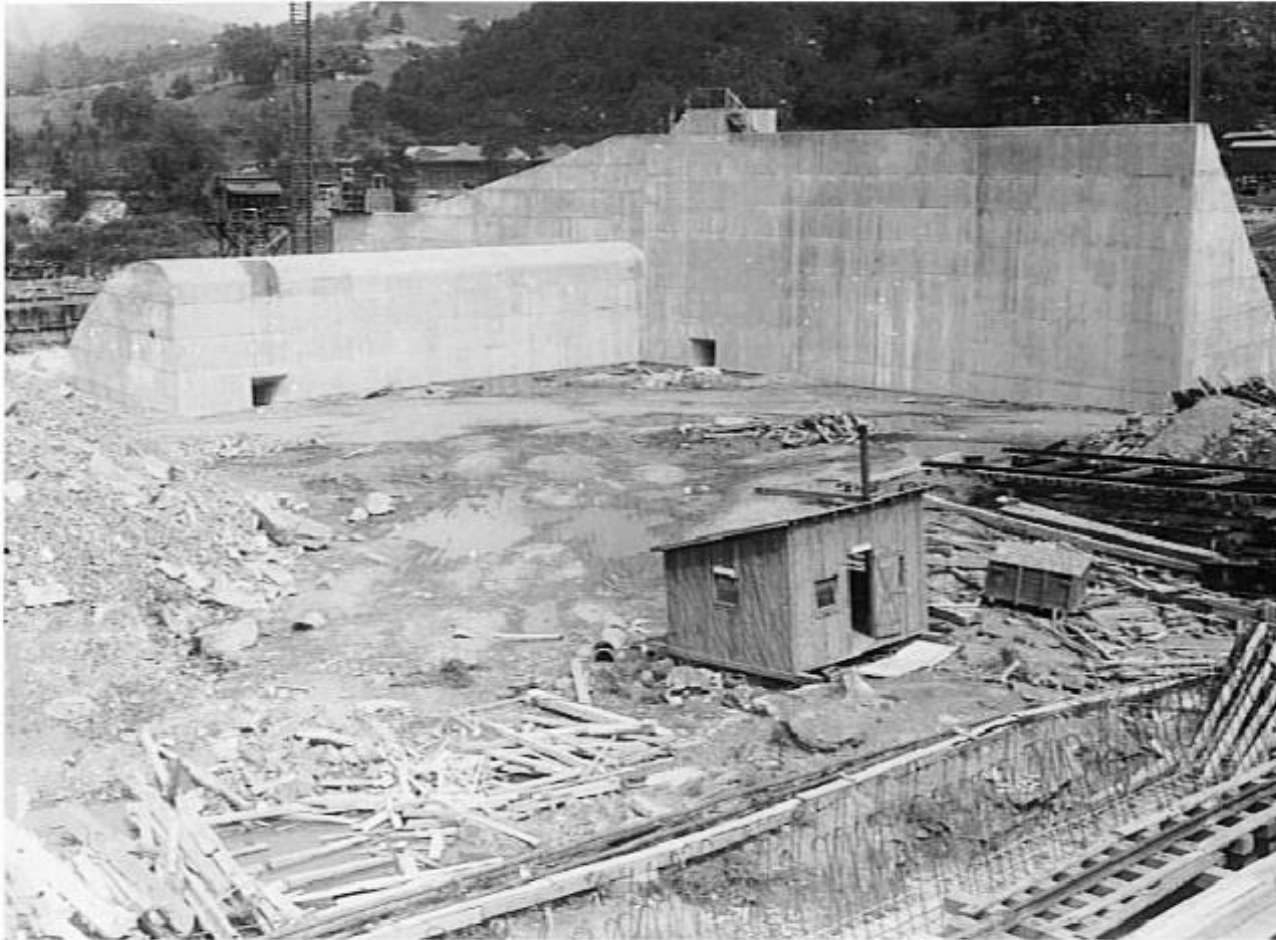
Bluestone Dam

1942 - Construction site



Bluestone Dam

1942 - Construction site

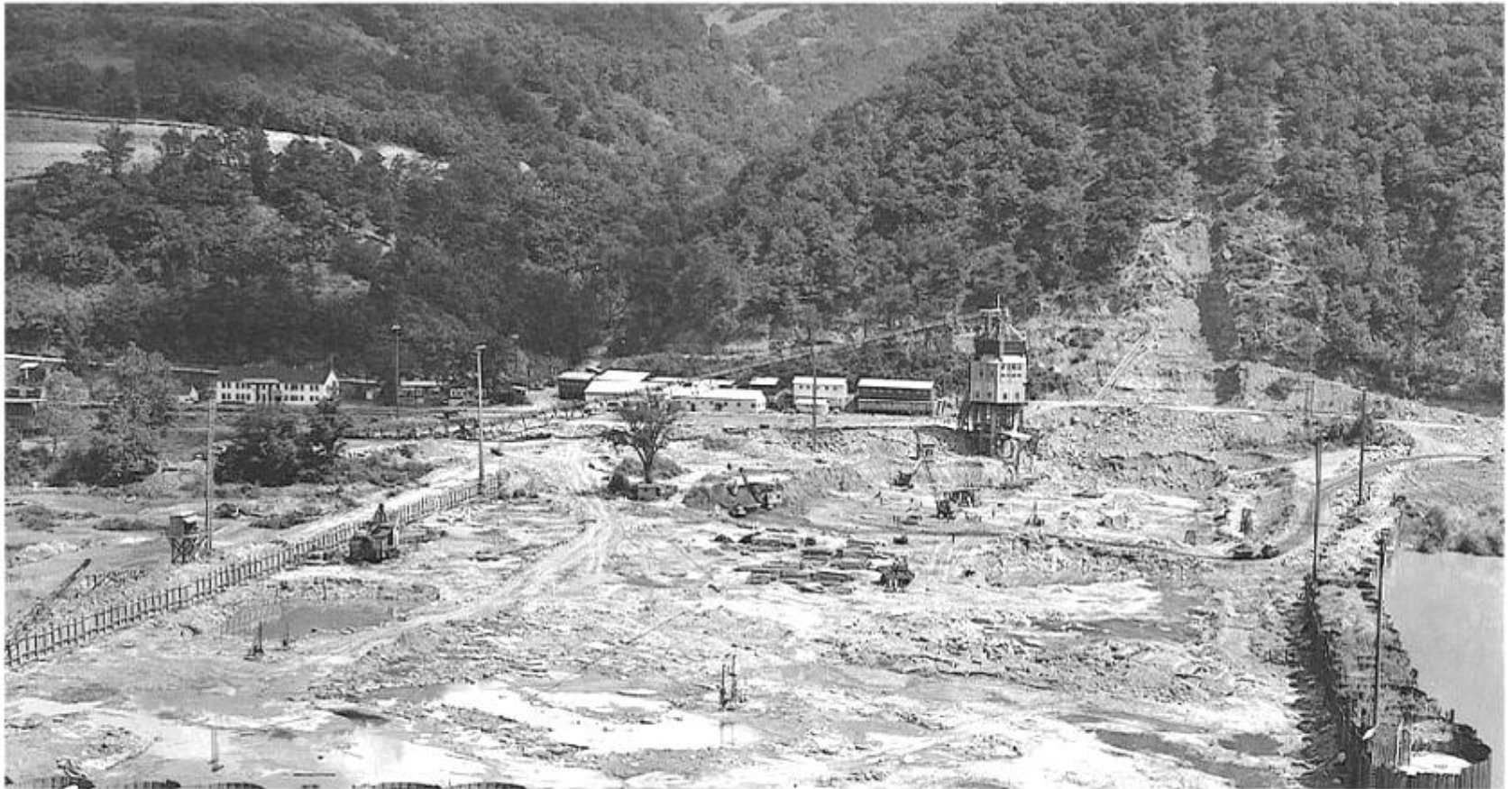


Bluestone Dam 1942 - Construction site



Bluestone Dam

1942 - Construction site



Bluestone Dam

1942 - Construction site



Bluestone Dam

1942 - Construction site



Bluestone Dam

1942 - Construction site



Bluestone Dam

1943 - Construction site



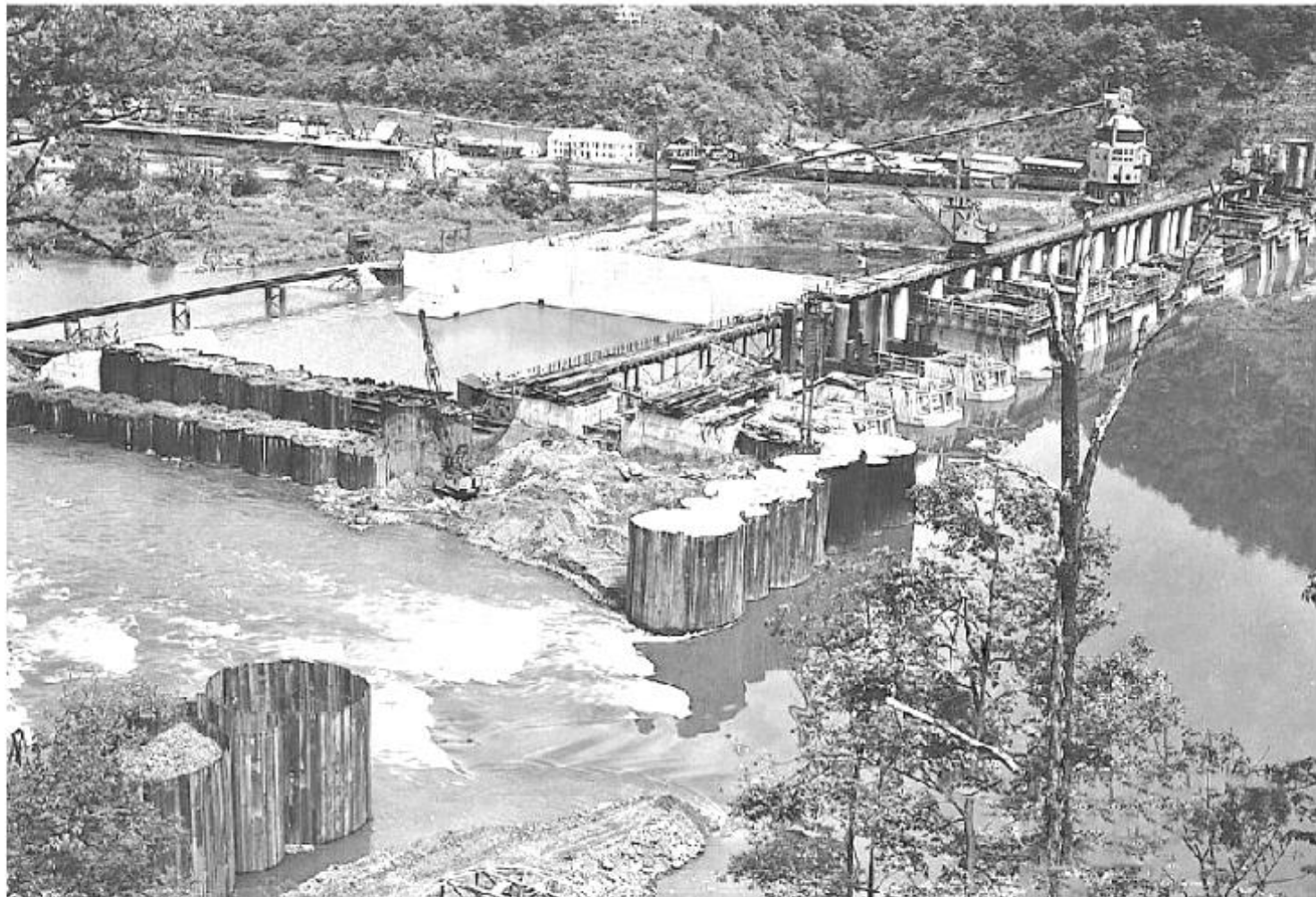
Bluestone Dam

1946 - Construction site



Bluestone Dam

1946 - Construction site



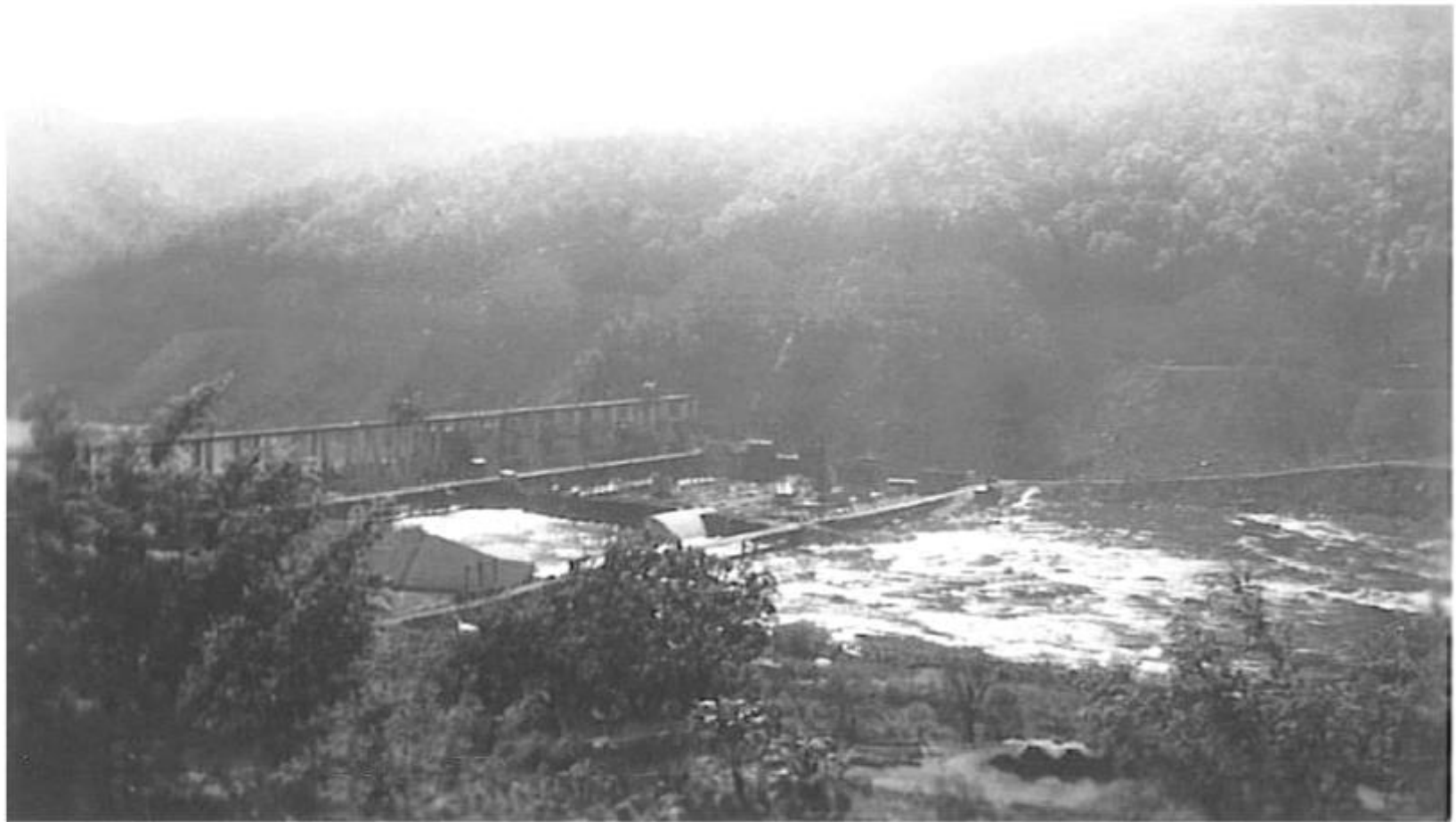
Bluestone Dam

1946 - Construction site

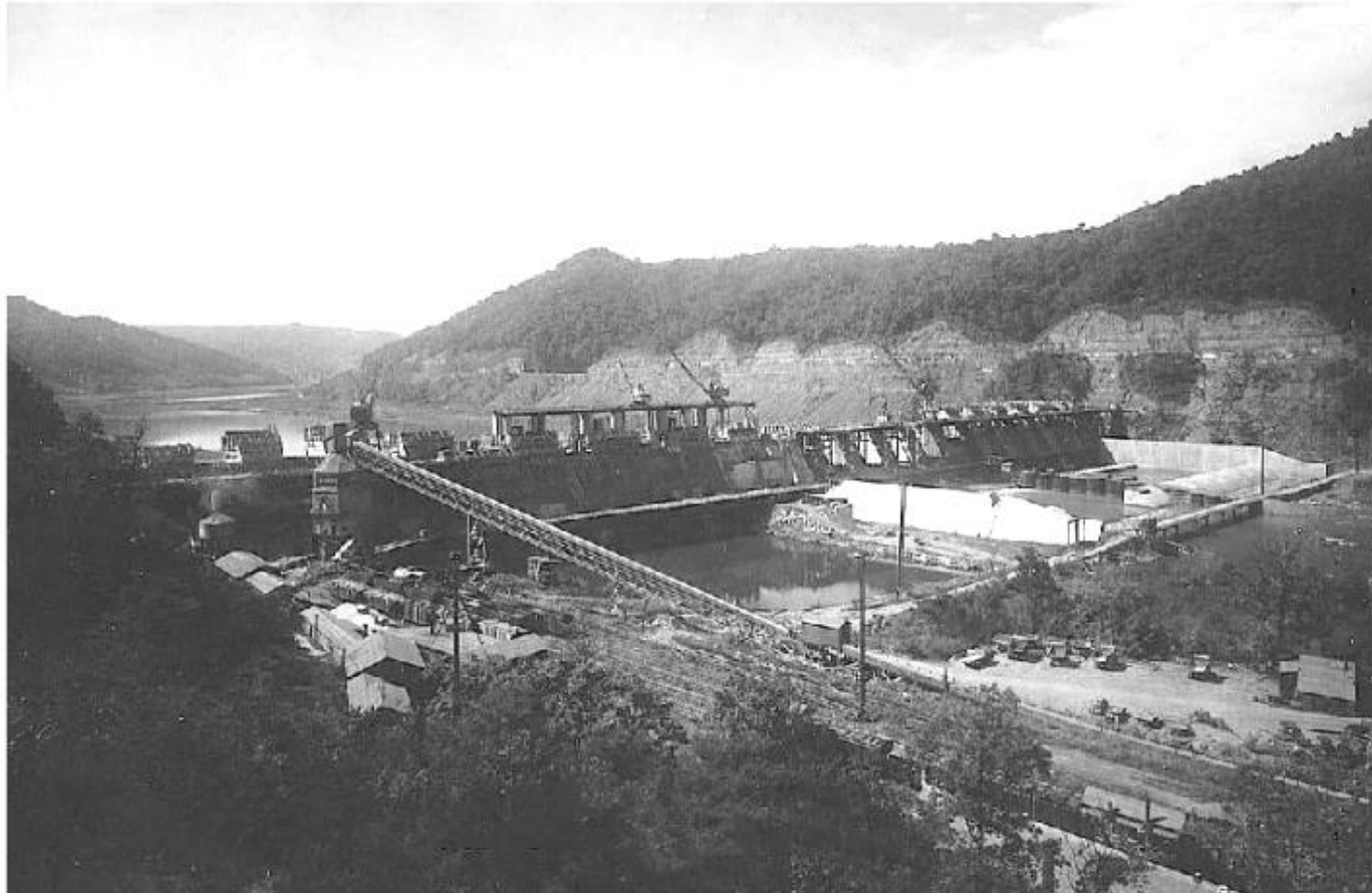


Bluestone Dam

1947 - Construction site



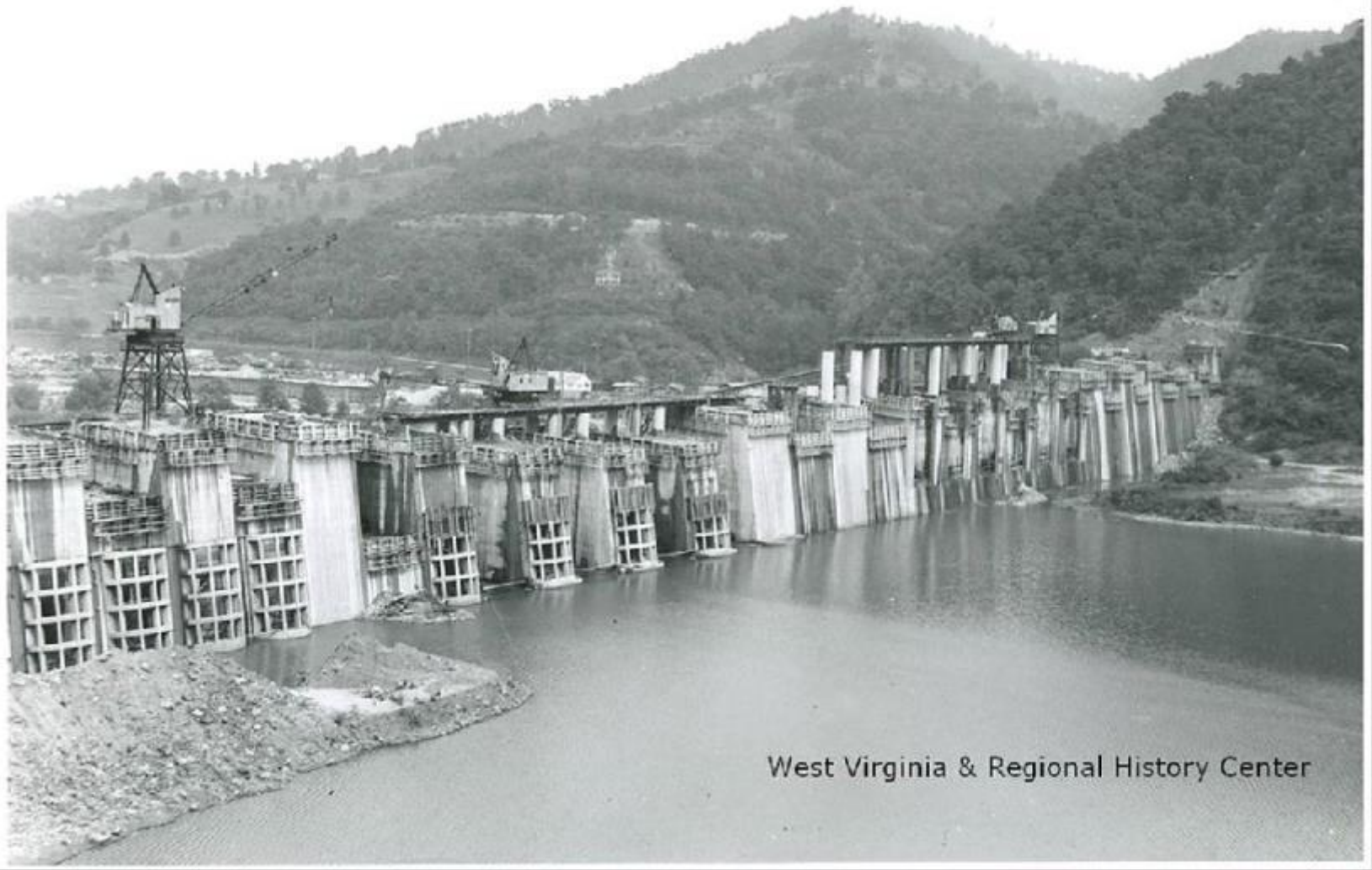
Bluestone Dam
1947 - Construction site
East view of Dam



Bluestone Dam
1947 - Construction site
Upper side of Dam

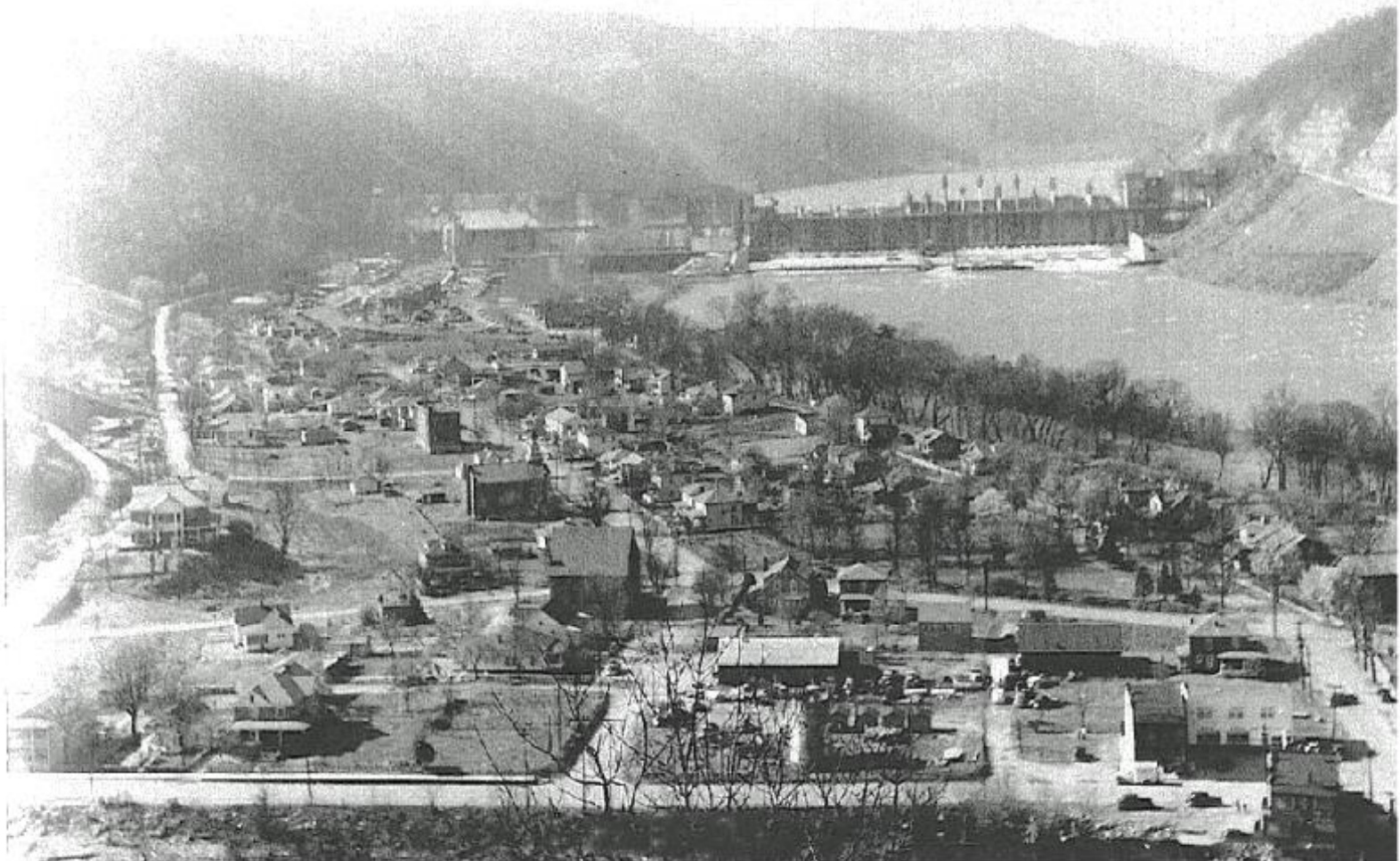


Bluestone Dam Construction – mid 1947
(Photo courtesy of West Virginia & Regional History Center)



West Virginia & Regional History Center

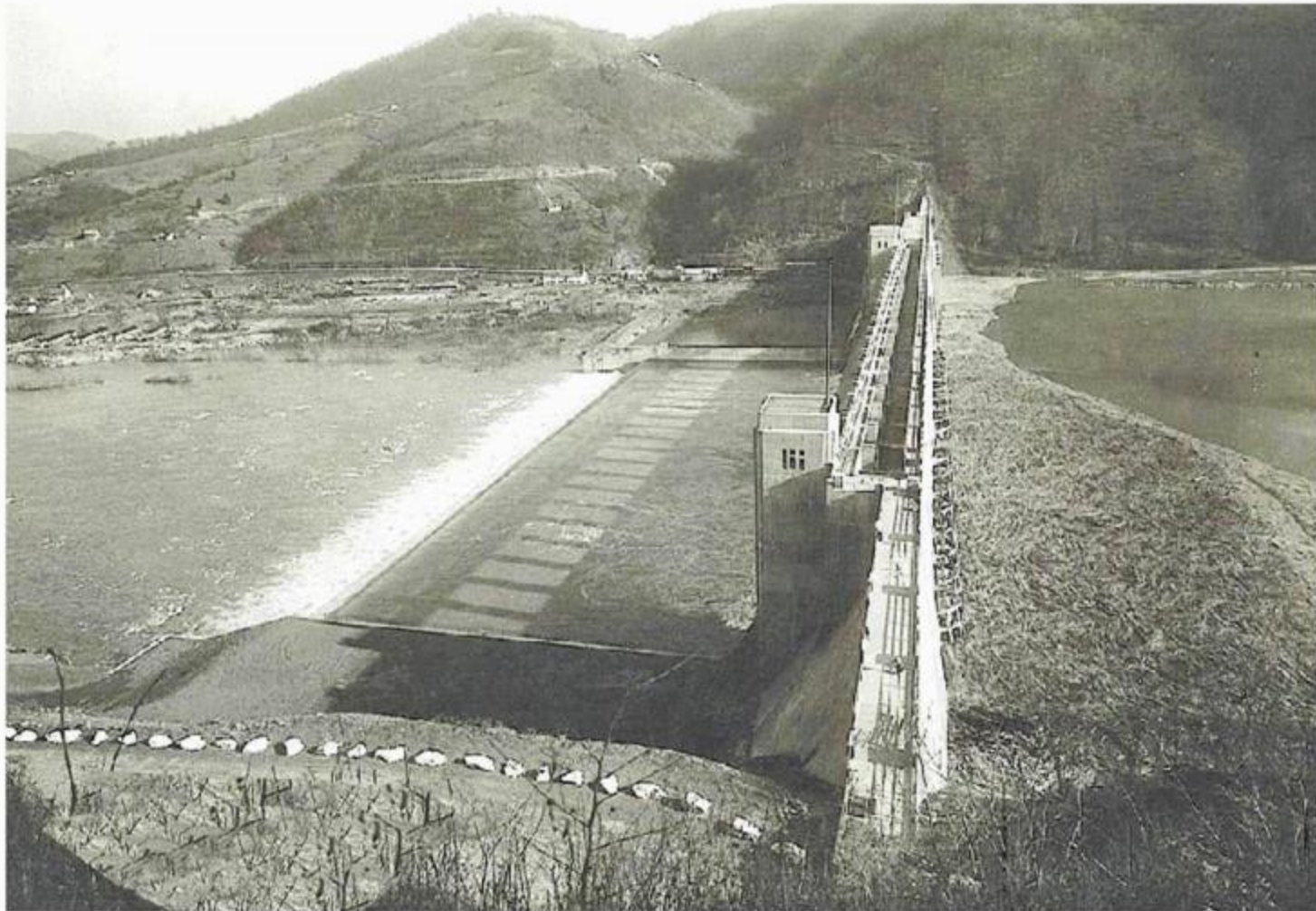
**Bluestone Dam
1948 - Construction site
and Lower Bellepoint**



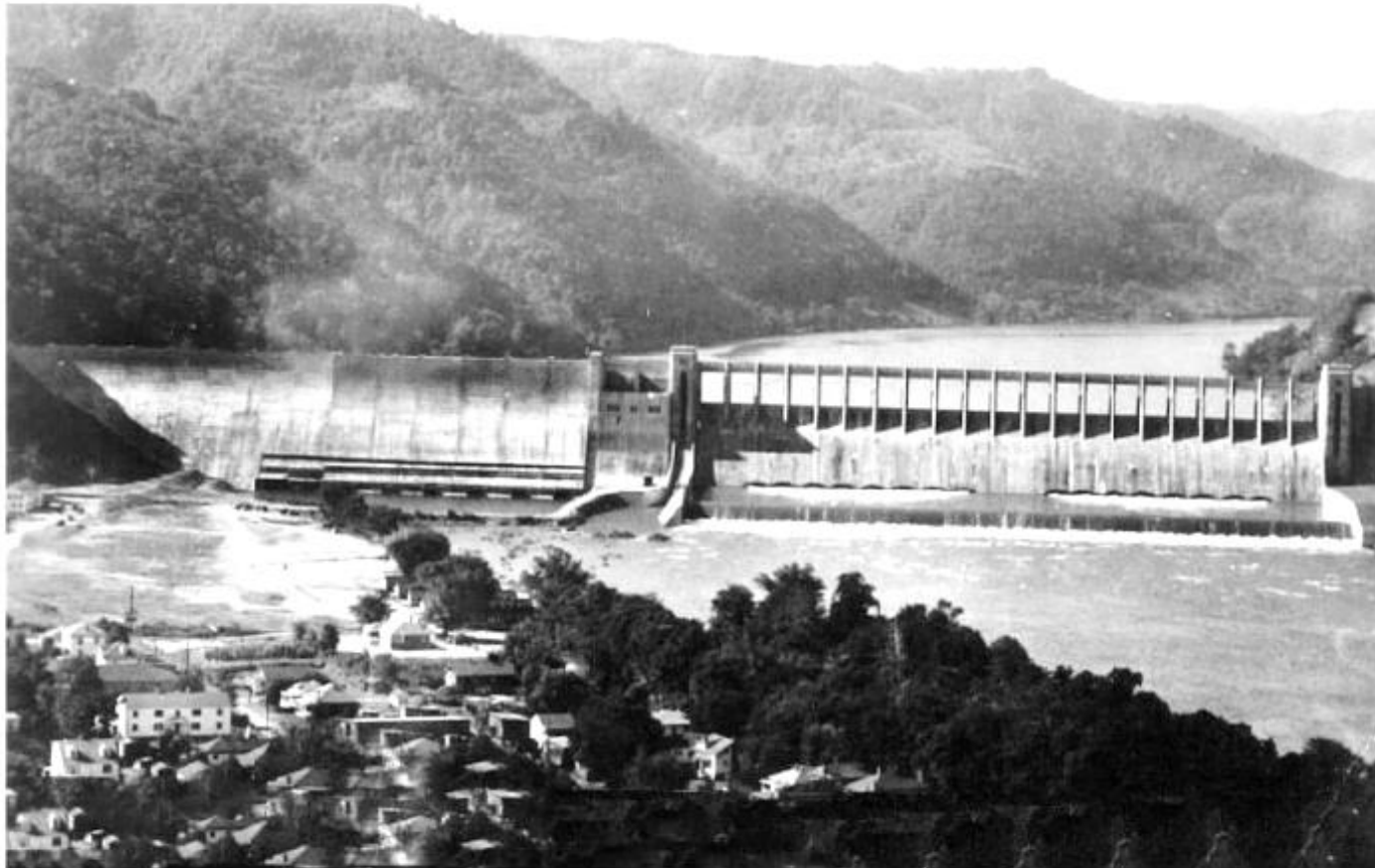
Bluestone Dam 1948 – Construction Site



Bluestone Dam
1948 – Looking down from Dam's axis

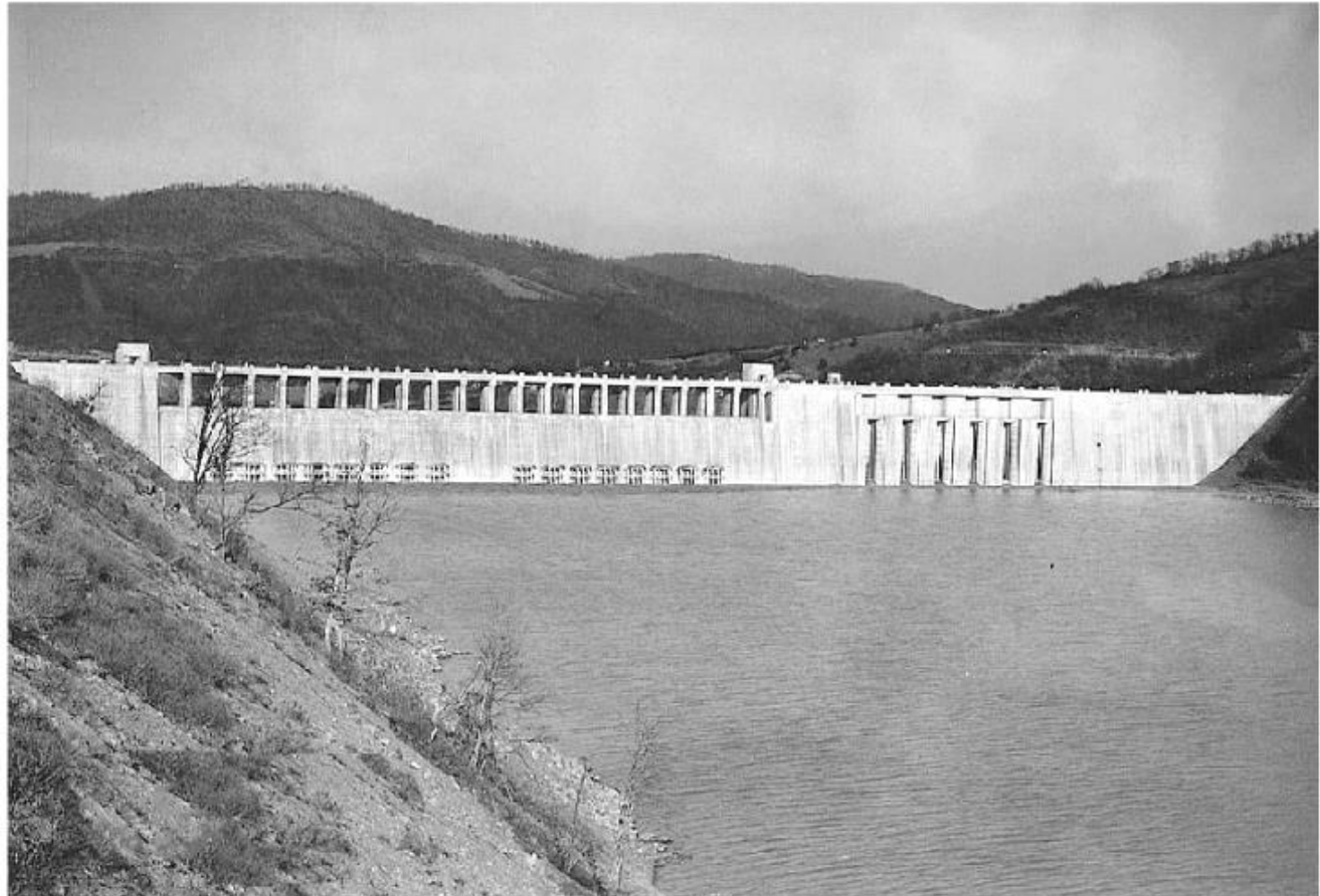


**Bluestone Dam
ca UNK
Lower Bellepoint**



Bluestone Dam

1948 - Above the Dam



Bluestone State Park Boat Dock No. 1 – 1955

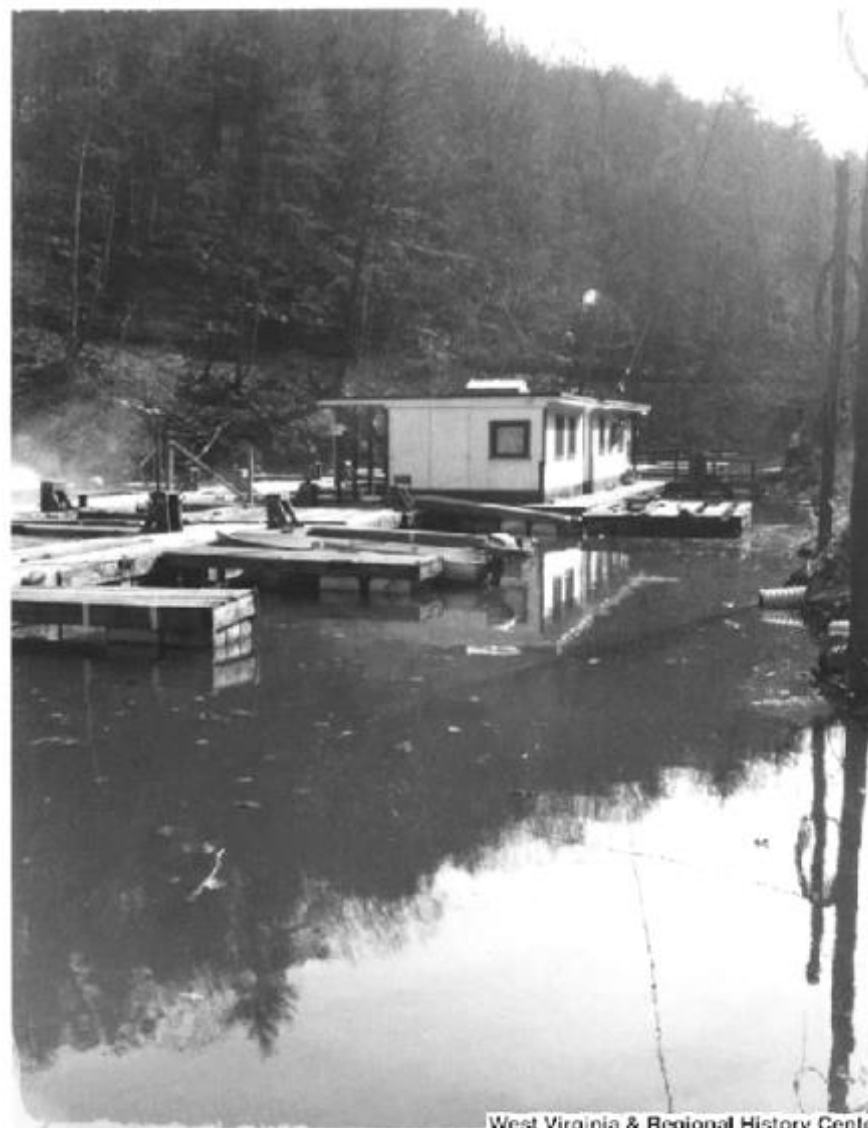
(Photo courtesy of West Virginia & Regional History Center)



West Virginia & Regional History Center

Bluestone Boat Dock No. 2 aka Jones's Boat Dock – 1955

(Photo courtesy of West Virginia & Regional History Center)



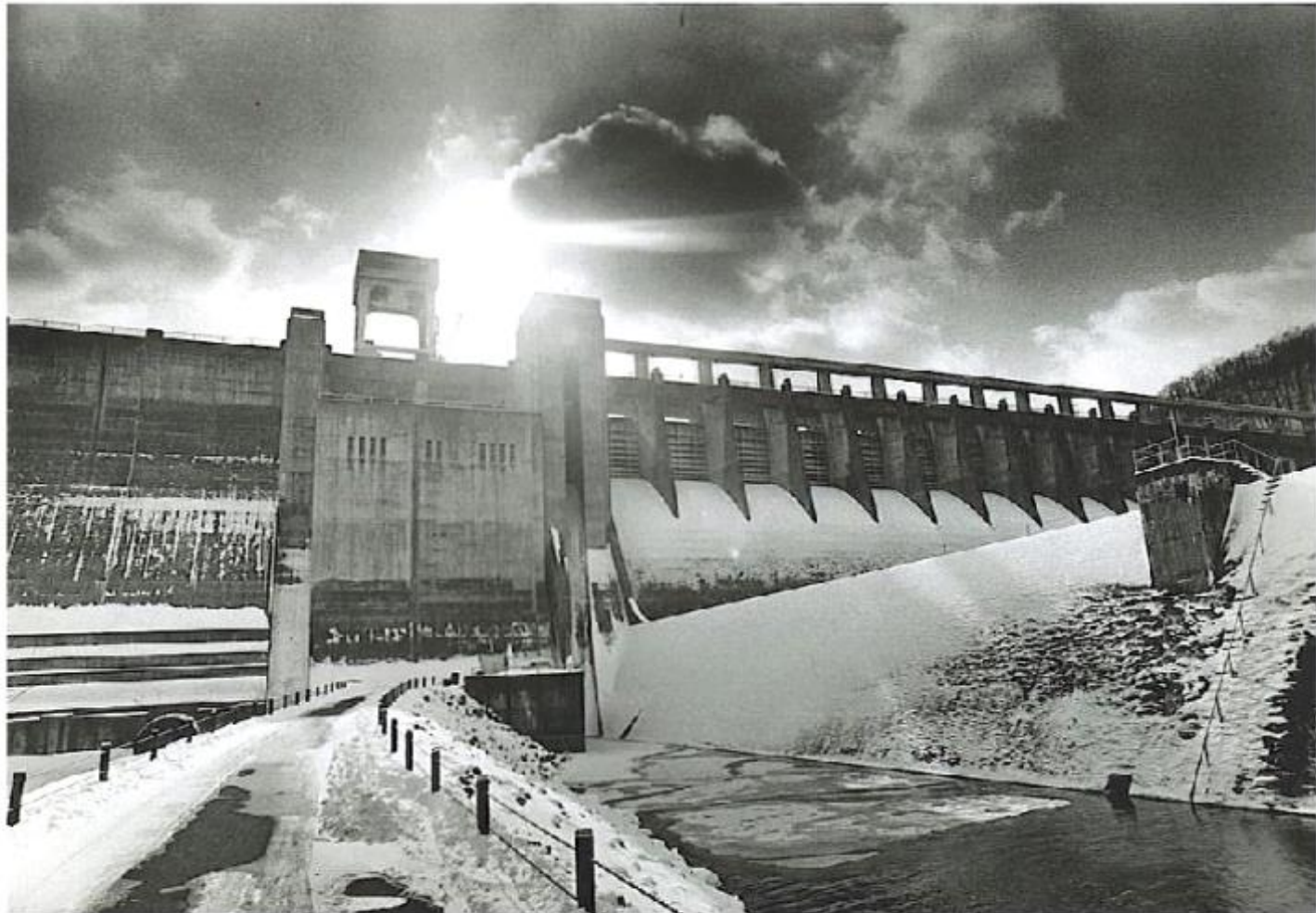
West Virginia & Regional History Center

Bluestone Dam
Aerial View - ca UNK
Courtesy of Fred Long



Bluestone Dam

1960 - Winter



Bluestone State Park Boat Dock No. 1 – mid 1960s

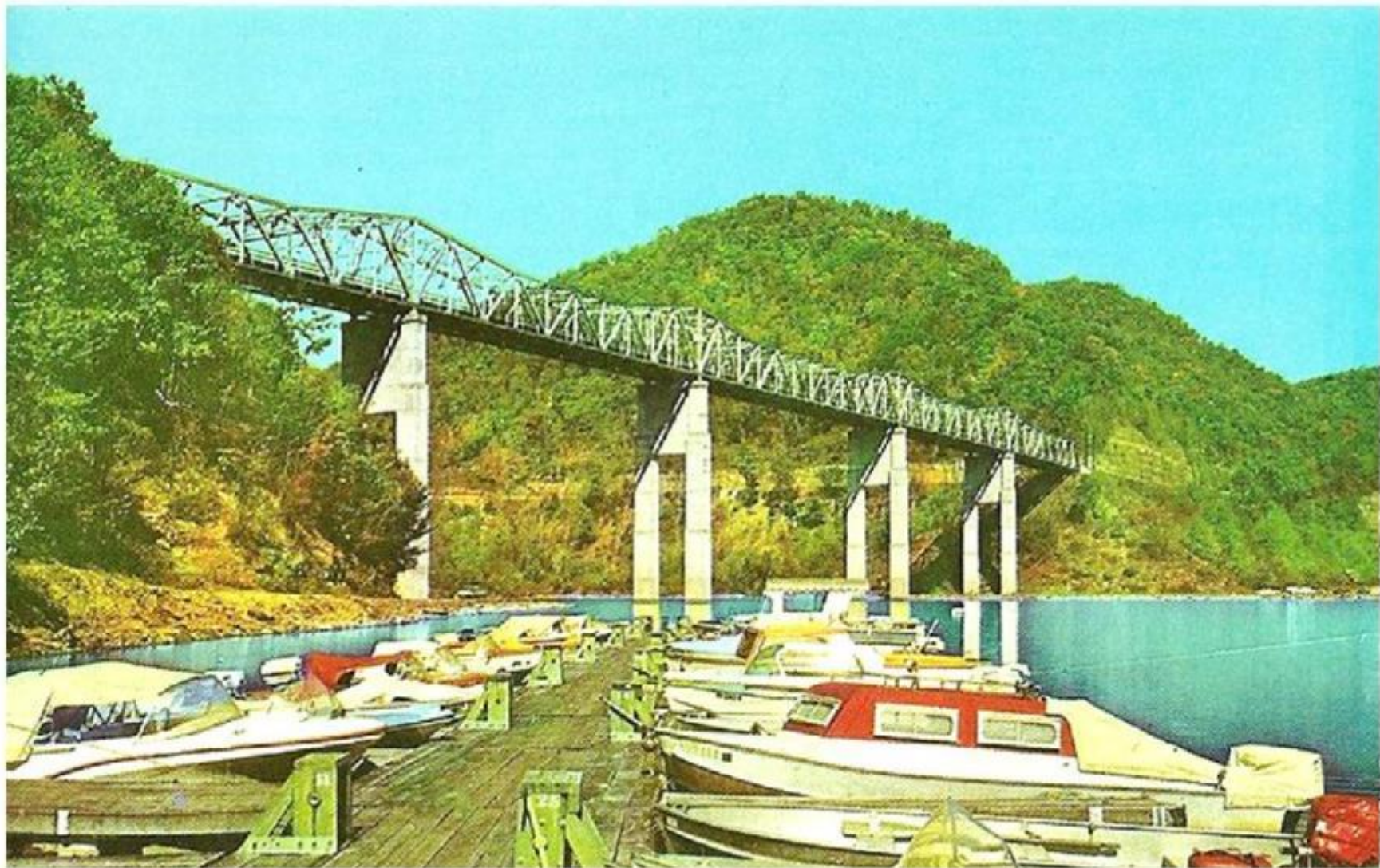


Aerial View – Bluestone State Park Boat Dock No. 1 – mid 1960s
(Photo courtesy of West Virginia & Regional History Center)



West Virginia & Regional History Center

Bluestone Boat Dock No. 2 aka Jones's Boat Dock – mid 1960s



Aerial View of Lilly Bridge and Jones's Boat Dock – mid 1960s

(Photo courtesy of West Virginia & Regional History Center)

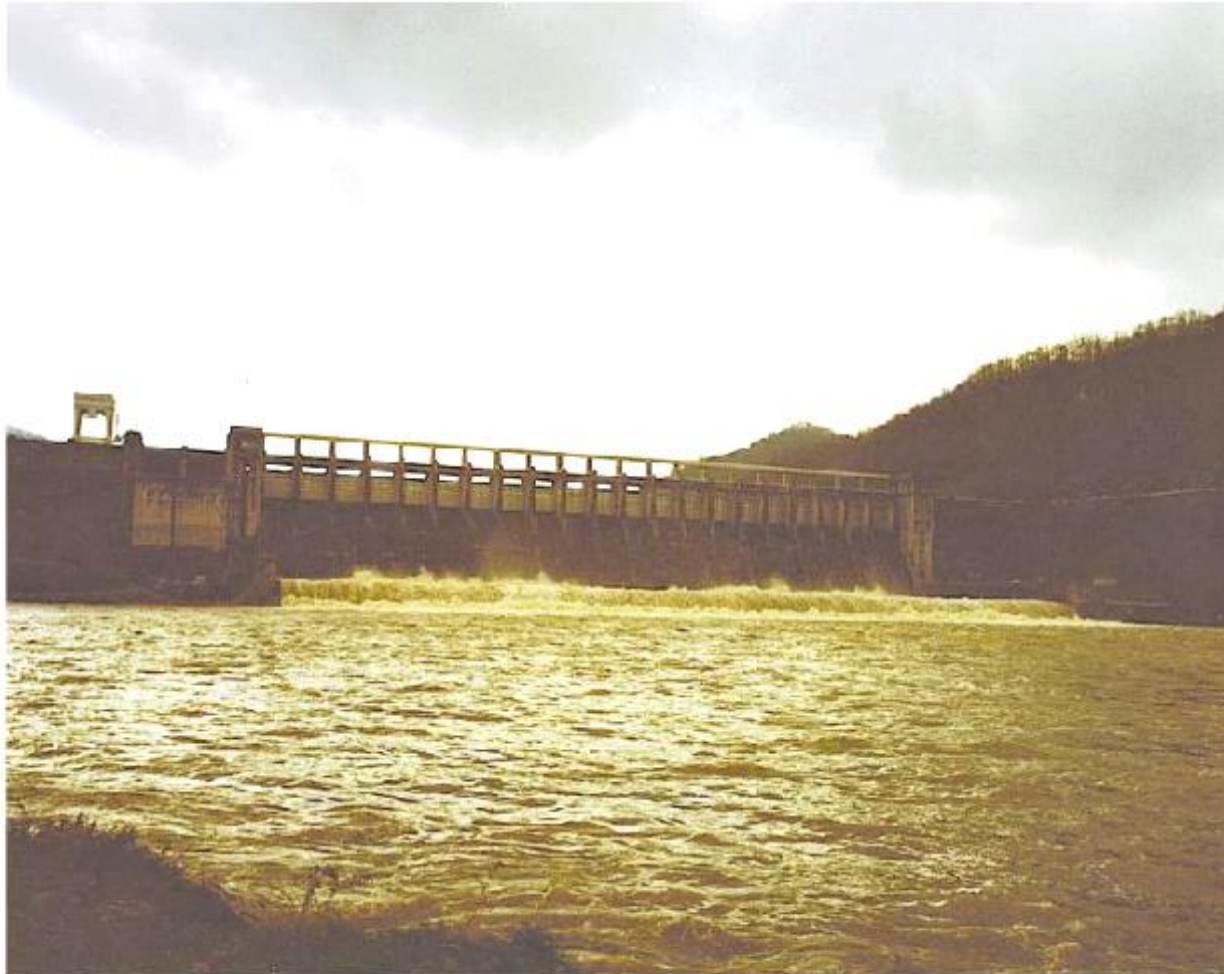


West Virginia & Regional History Center

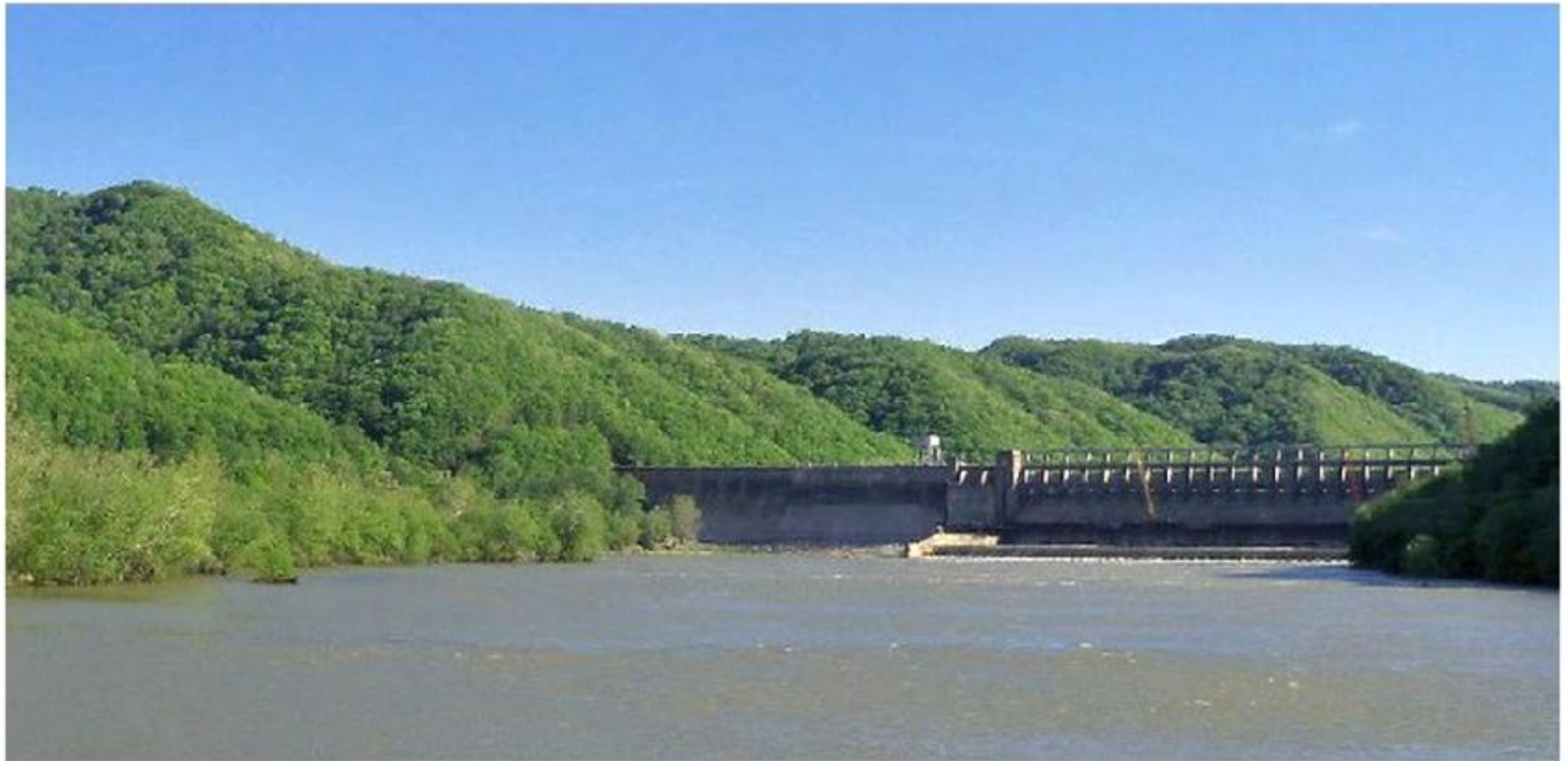
Bluestone Dam
1970 - All lower gates open



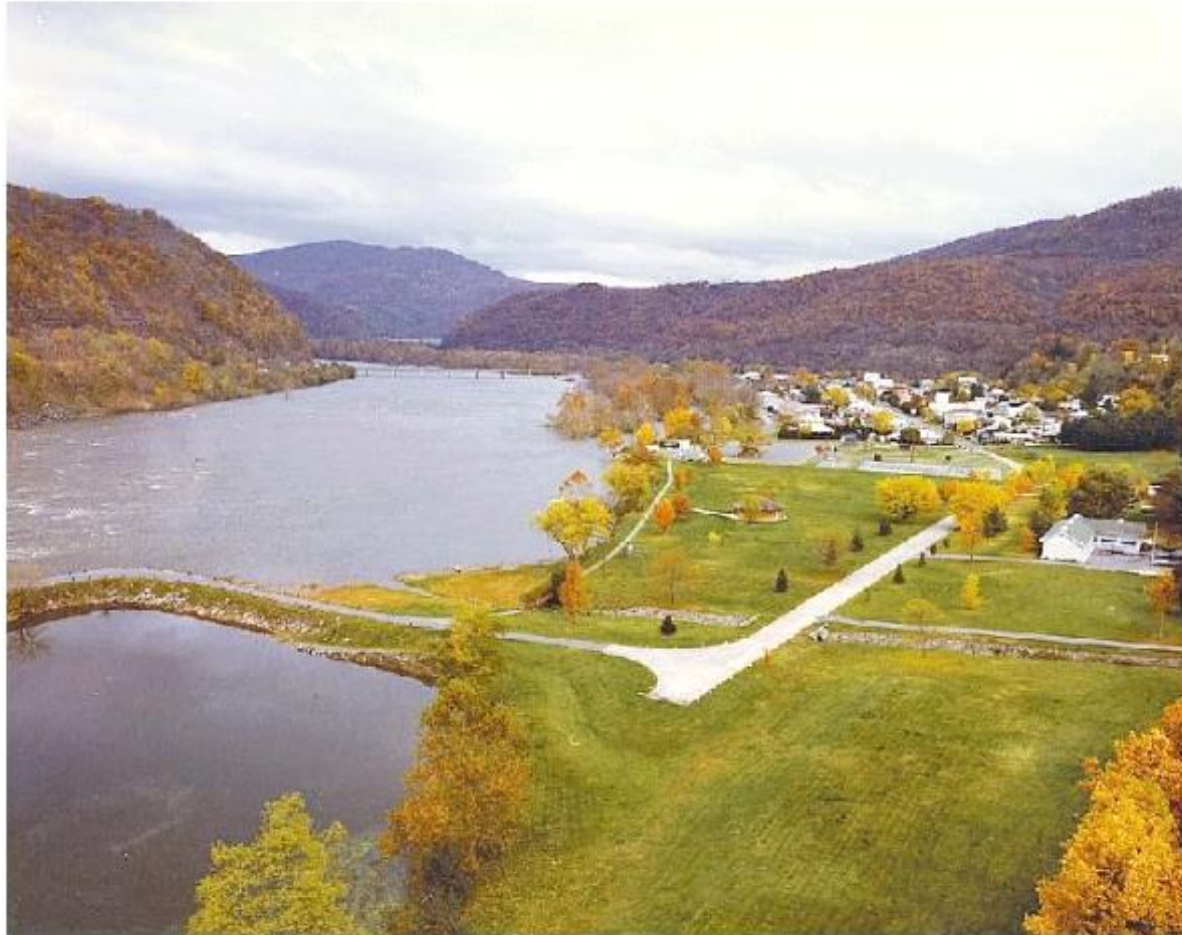
Bluestone Dam
1970 - All lower gates open



**Bluestone Dam
ca UNK
Water level view below the Dam**



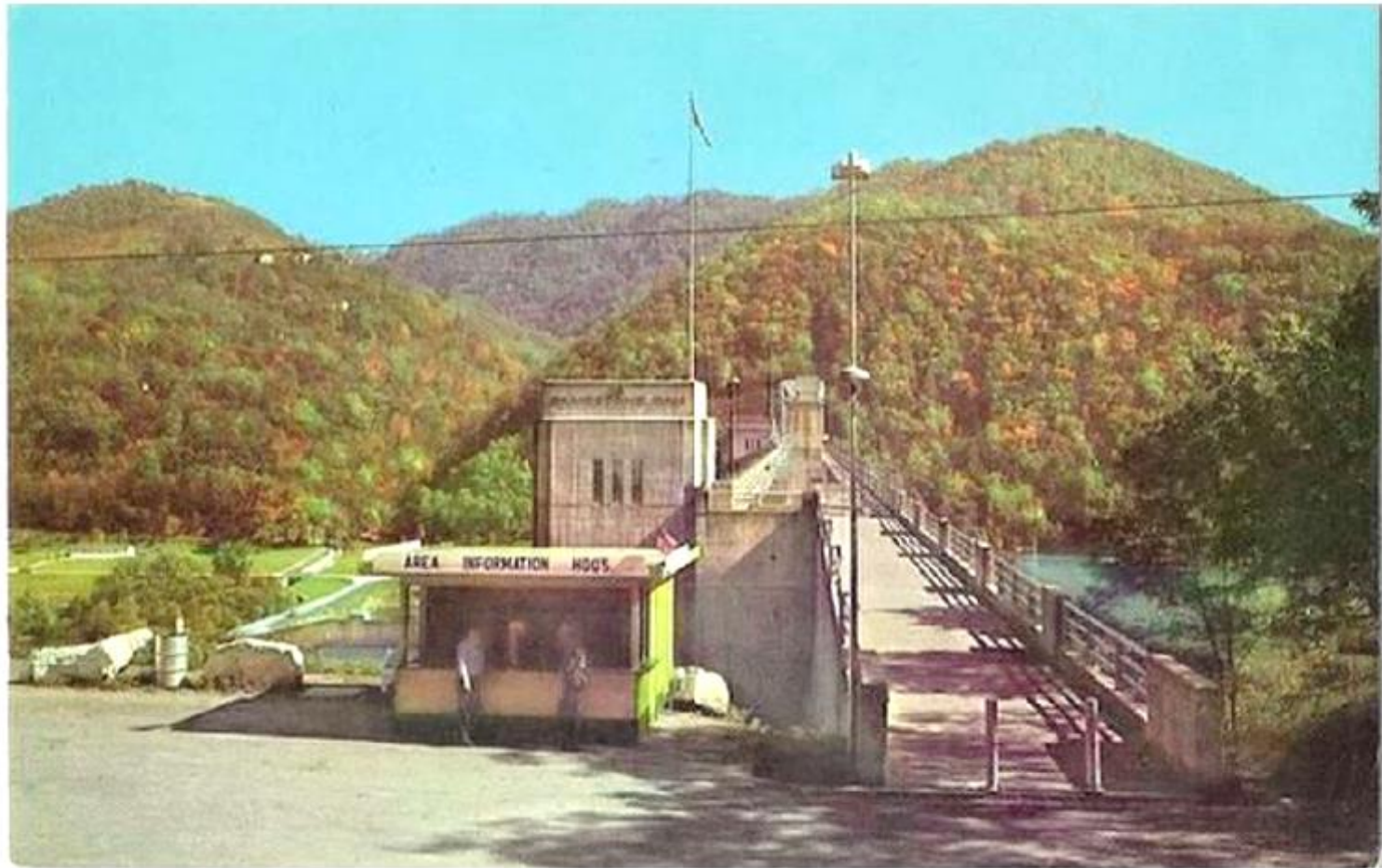
**Bluestone Dam
1970 - View downstream
from atop of Dam**



Bluestone Dam
1970 - Fall
Below the Dam



**Bluestone Dam
ca 1970s
Information Booth**



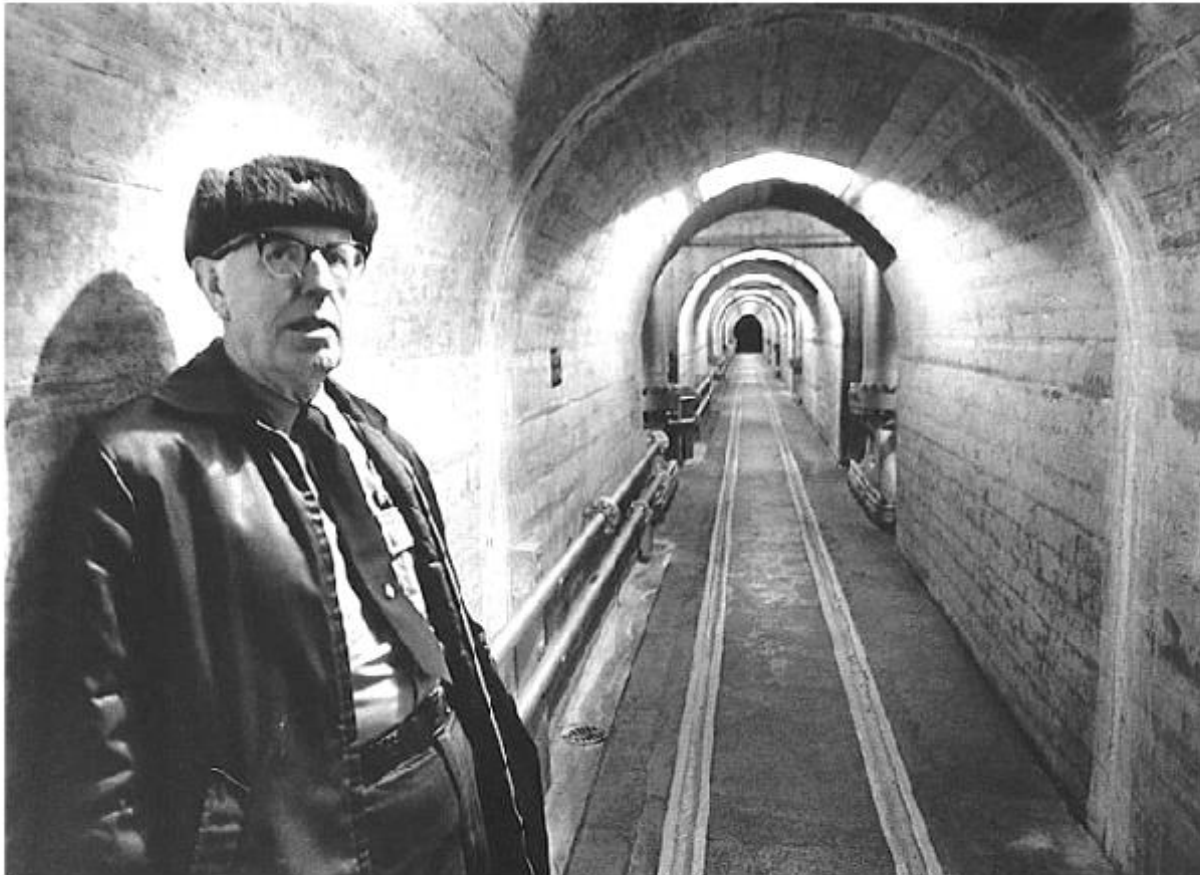
Bluestone Lake

1970 - Fall



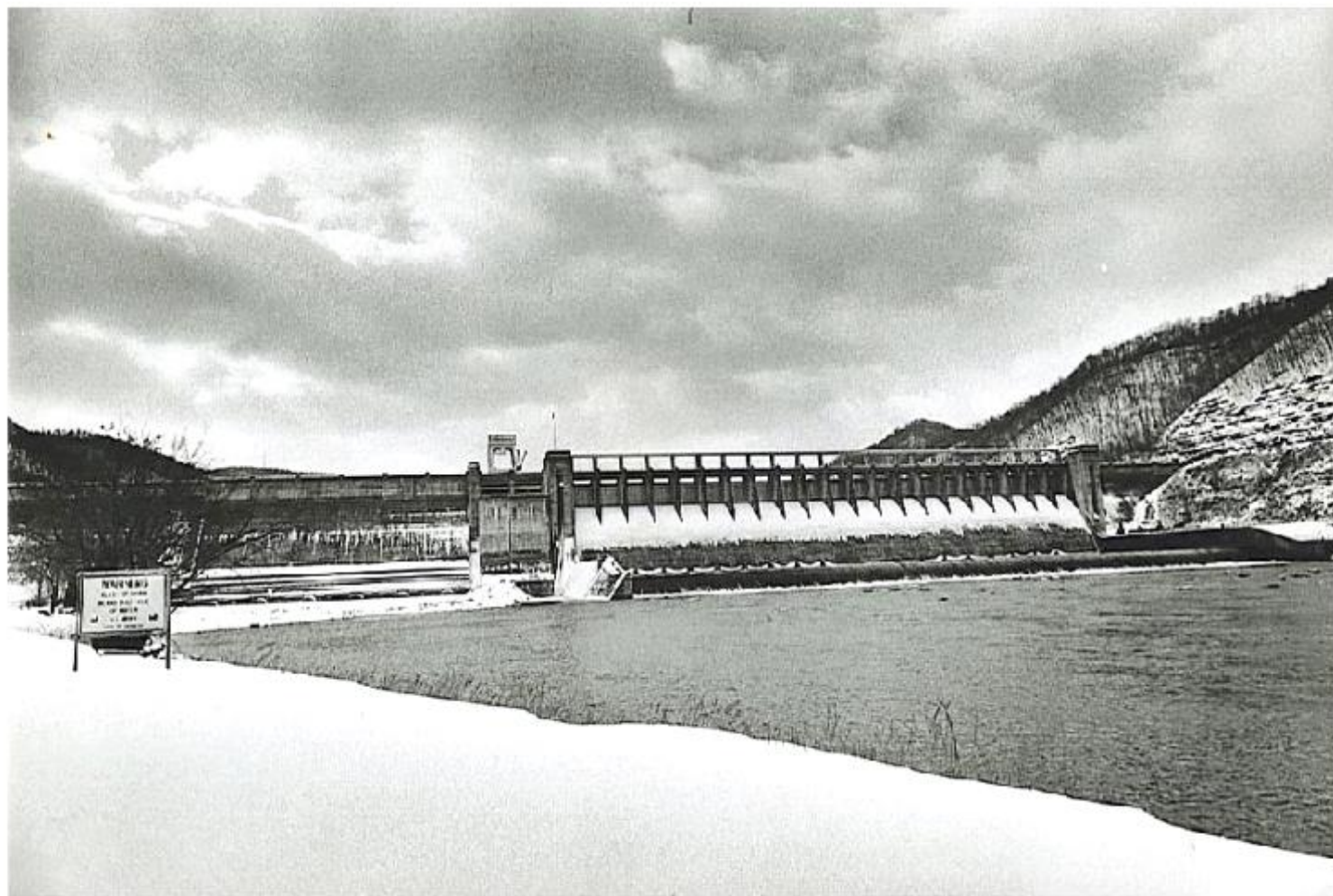
**Bluestone Dam
1980 - Jimmy Hutchison
inside of Dam**

courtesy of Charleston Daily Mail - Craig Cummingham



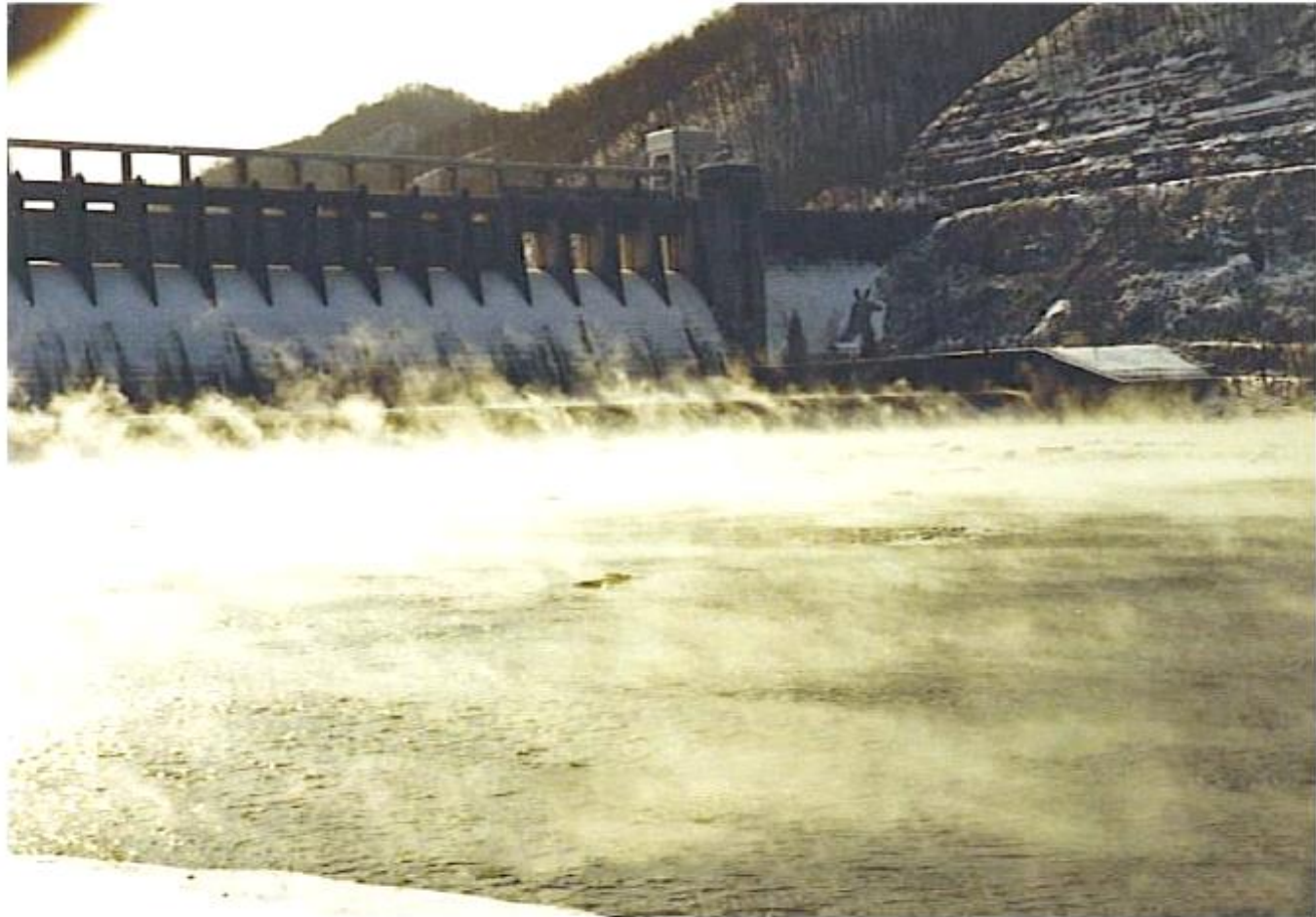
Bluestone Dam

1980 - Winter



Bluestone Dam

1985 - -20 degrees



Bluestone Dam
1985 - -20 degrees
looking downstream from Dam



Bluestone Dam

1985 - Glory Hole



Bluestone Lake

1985 - Fall



Bluestone Marina – Previously Jones’s Boat Dock - UNK



Bluestone Lake

1986 - Winter



Bluestone Dam

1987 - Build up behind the dam



Bluestone Dam

1988 - All Gates closed



Bluestone Dam
1988 - All Gates closed
Looking downstream



Bluestone Dam

1994 - All Gates closed



Bluestone Lake

1994 - Fall



Bluestone Lake

1994 - Fall



Bluestone Lake 1994 - Winter



Bluestone Lake – 1995



Bluestone Lake
Oct. 1995

Bluestone Dam
1995
Moonrise below the dam



Bluestone Dam

1996 - Build up behind the dam



Bluestone Dam

1996 – Build up behind the dam



Bluestone Dam

1996 - Flood Gates open



**Bluestone Dam
1996
Flood Gates open**



**Bluestone Dam
1996 - Winter
Lower Bellepoint**



**Bluestone Lake
1996 - Winter
Frozen Lake**



Bluestone Dam
Aerial View
ca UNK



**Bluestone Dam
ca UNK
Foggy Morning**



Bluestone Dam

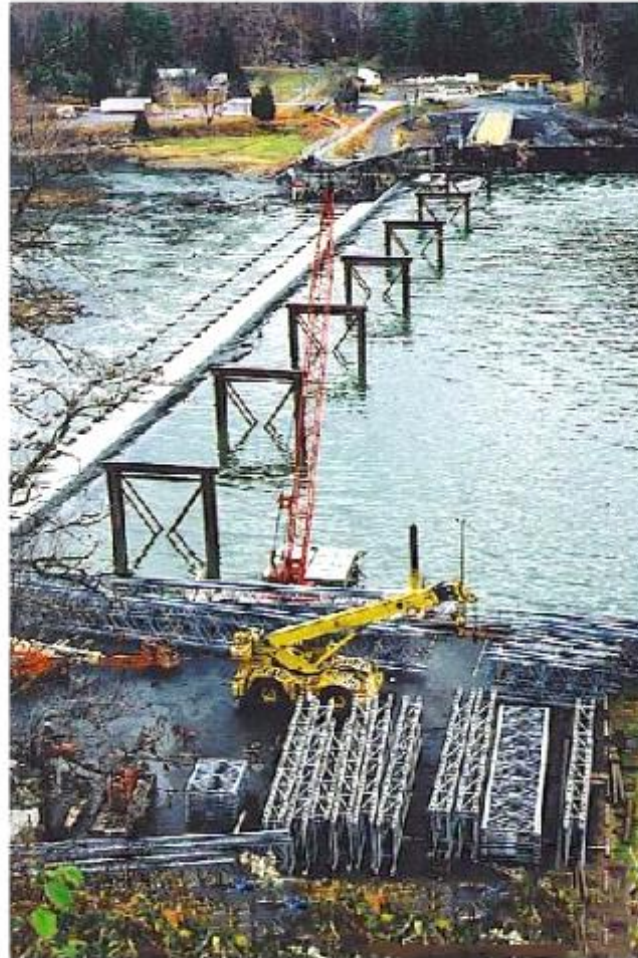
2001 - Building temporary construction bridge



Bluestone Dam

2001

Building temporary construction Bridge



Bluestone Dam
2001
Building Temporary Bridge



Bluestone Dam

2001 - Empty Glory Hole



Bluestone Dam

2001 - Empty Glory Hole (on right)



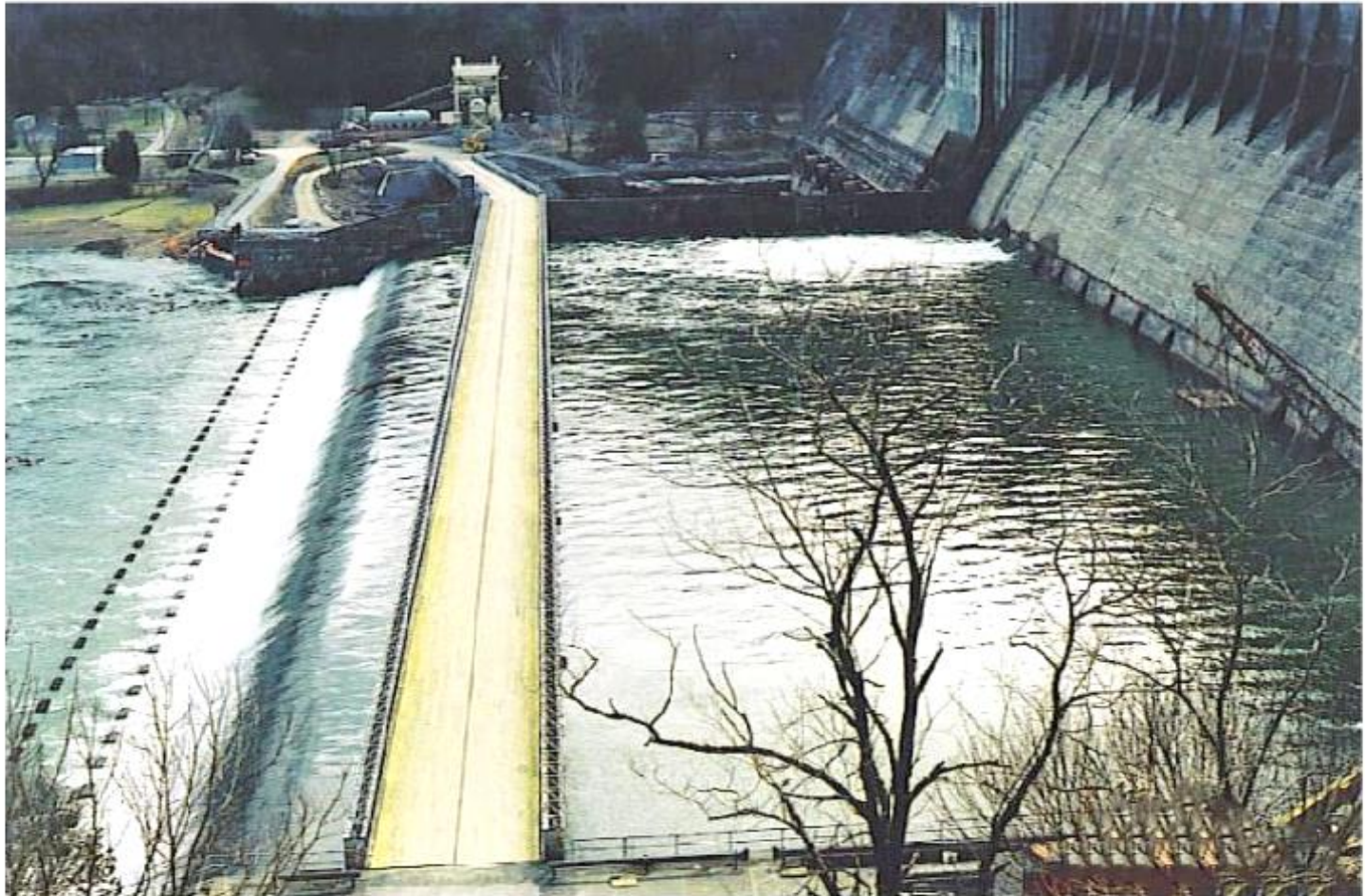
Bluestone Dam

2001 - Winter



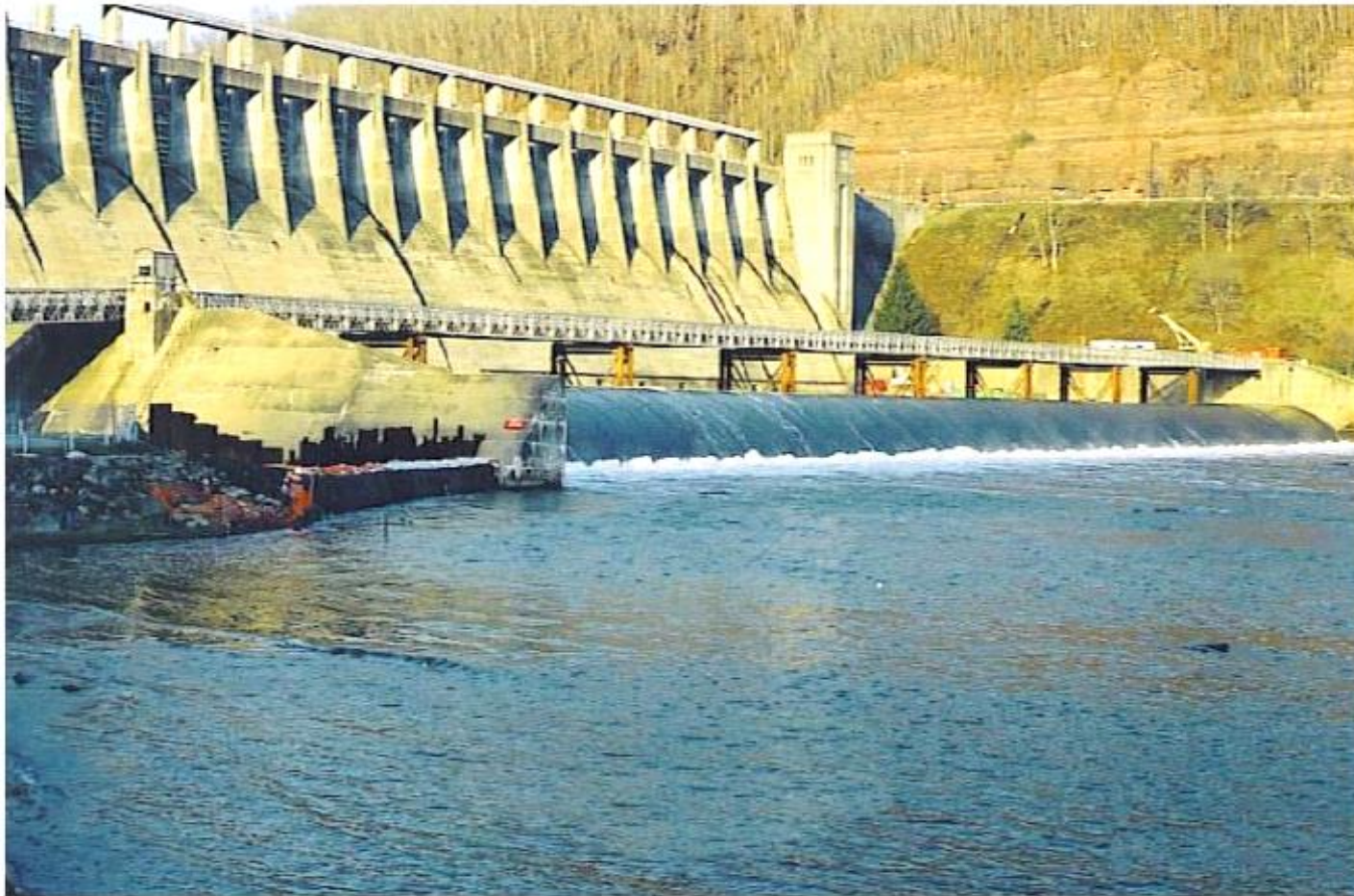
Bluestone Dam

2002 - Temporary Bridge completed



Bluestone Dam

2002 - Temporary Bridge completed



Bluestone Dam

2003 - Construction in old Glory Hole



Bluestone Dam

2003

Temporary construction bridge



**Bluestone Dam
2003 - Temporary Bridge
over old Glory Hole**



**Bluestone Dam
2004
Below the Dam with all gates shut**



Bluestone Dam

2004

**Below the Dam with all gates closed
with temporary construction bridge**



Bluestone Dam

2004

Below the Dam with all gates closed



Bluestone Dam

2004

Below the Dam with all gates closed



**Bluestone Dam
2004
Lakeside construction barge**



Bluestone Dam
2004
Temporary construction bridge



Bluestone Dam
2008
New fishing walkway



Bluestone Dam
2009
Just below the dam



Bluestone Dam 2010 - Winter



Vicky Maddy 1/30/2010

Bluestone Dam 2010 - Winter



Bluestone Dam

2010 - Winter



**Bluestone Dam
2010 - Winter
Just below the Dam**



Bluestone Dam
2011
Construction cranes



Bluestone Dam

2012

Looking downstream just below the dam



Bluestone Dam
2012
View from Fishing Pier



Bluestone Dam - UNK
Spillway at night



Bluestone Dam – April 2014

(All gates closed)



Bluestone Dam – April 2014

(All gates closed)



Bluestone Dam Spillway – April 2014

(All gates closed)



New River – April 2014
(In front of Bluestone Dam, all gates closed.)



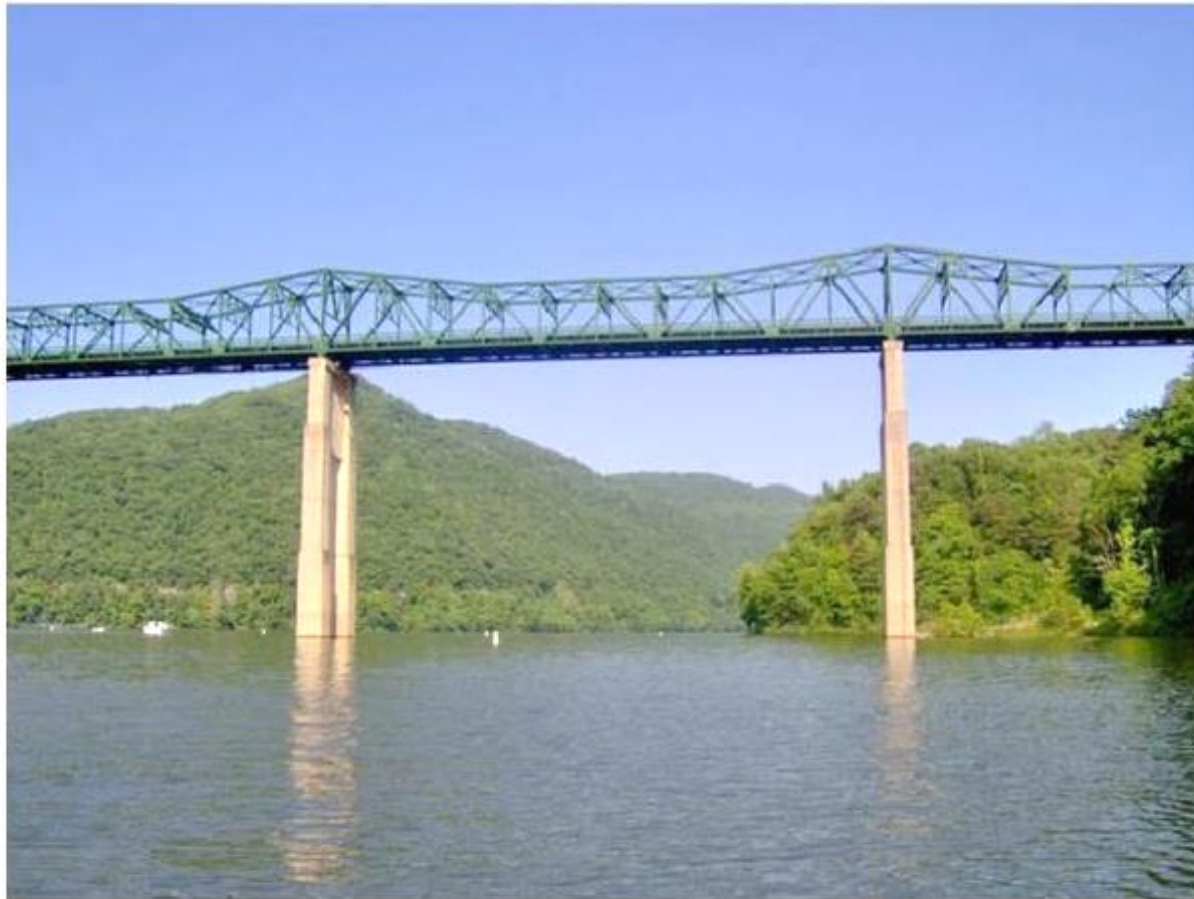
**Bluestone Dam
2014
Construction from former Glory Hole**



Bluestone Dam
2016 - Under the Milky Way
Courtesy of Michael Gill



**Bluestone Dam
ca UNK
Original Lilly Bridge**



**Bluestone Lake
ca UNK
Mountain View of Lilly Bridge**



Bluestone Lake Marina ca UNK



Bluestone Dam
2015
Fall Colors



Bluestone Lake
2015 - Fall
Beautiful!



**Bluestone Lake
2015 - Winter
Frozen Lake**



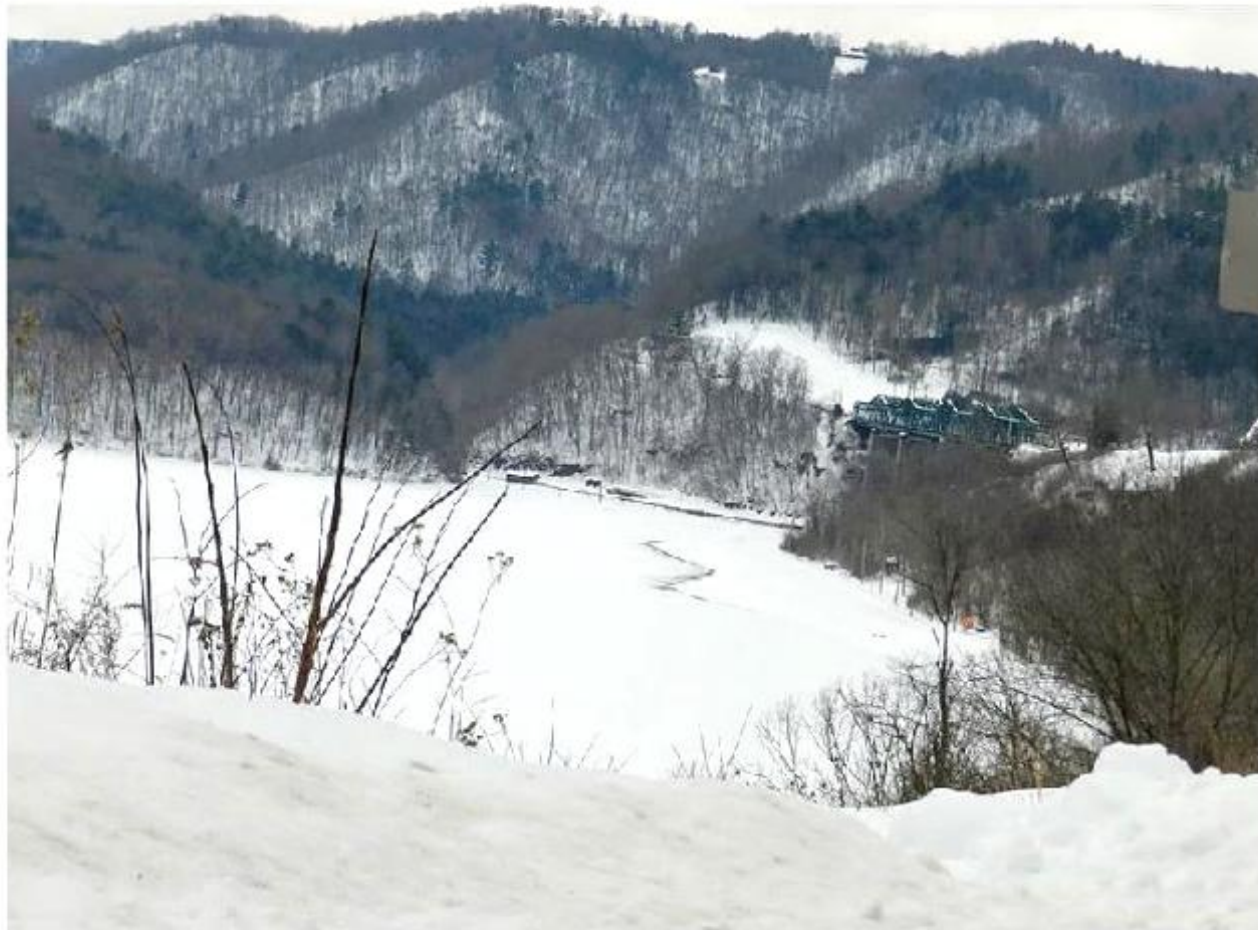
**Bluestone Lake
2015 - Winter
Frozen Lake**



**Bluestone Lake
2015 Winter
Lilly Bridge - Frozen Lake**



**Bluestone Lake
2015 - Winter
Lilly Bridge - Frozen Lake**



Bluestone Lake
Winter 2016
Courtesy of Sam Richmond



Bluestone Lake
2017
Courtesy of Jim Browder



Bluestone Dam
Under the Milky Way - 2017
Courtesy of Michael Gill Photography



**Bluestone Lake
ca UNK
Beautiful Fall Leaves**



**Bluestone Lake
ca UNK
Beautiful!**



**Bluestone Lake
ca UNK
Foggy Morning**



Bluestone Lake
Rainbow - ca UNK
Courtesy of Carolyn Stephens



**Bluestone Lake
Sailboat
ca UNK**



**Bluestone Dam
with Glory Hole
ca UNK**



Bluestone River Above Lilly Bridge – February 2019
Following rains Bluestone Lake was 57 feet above winter pool.



New Lilly Bridge – February 2019
Following rains Bluestone Lake was 57 feet above winter pool.



Marina and Lilly Bridge – February 2019
Following rains Bluestone Lake was 57 feet above winter pool.



Bluestone Dam – February 2019
Following rains Bluestone Lake was 57 feet above winter pool.



Bluestone Dam – February 2019

Following rains Bluestone Lake was 57 feet above winter pool.



Bluestone Dam Spillway – February 2019
Following rains Bluestone Lake was 57 feet above winter pool.



Bluestone Dam Spillway – February 2019
Following rains Bluestone Lake was 57 feet above winter pool.



Bluestone Dam Spillway – February 2019

Following rains Bluestone Lake was 57 feet above winter pool.



Bluestone Dam Spillway – February 2019
Following rains Bluestone Lake was 57 feet above winter pool.



New River Below Spillway – February 2019
Following rains Bluestone Lake was 57 feet above winter pool.

